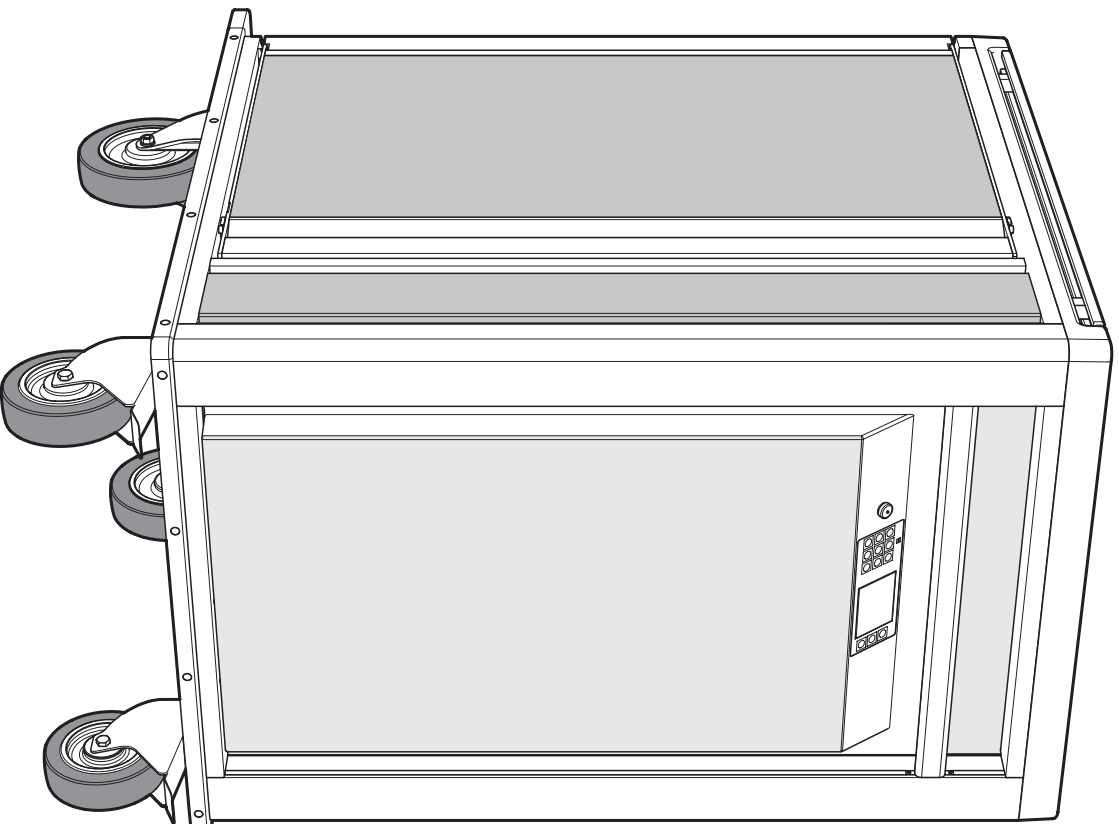


UNITRAY



IT CATALOGO PARTI DI RICAMBIO

GB SPARE PARTS LIST

DE ERSATZTEILKATALOG

FR PIÉCES DE RECHANGE

FI VARAOSALUETTELO

NL KATALOOG WISSELSTUKKEN

PL KATALOG CZĘŚCI ZAMIENNYCH

PT CATÁLOGO DE PEÇAS SOBRESSALENTE

RU КАТАЛОГ ЗАПАСНЫХ ДЕТАЛЕЙ

ES CATÁLOGO PARTES DE RECAMBIO

DK RESERVEDELSKATALOG

IT - Per rintracciare il componente e l'informazione di interesse, procedere nel modo indicato:
A Dall'indice figurativo della macchina individuare il numero di tavola da consultare:
B Individuata la tavola di interesse, rintracciare i componenti da richiedere ed il relativo codice di ordinazione.
Per ordinare i ricambi rivolgersi, via tel, via fax o via e-mail ad un distributore autorizzato, avendo cura di riportare anche il numero di matricola della macchina.
NB: per evitare disguidi, effettuare l'ordinazione dei ricambi in modo corretto e completo.

GB - Keep to the following instructions in order to find the desired component and information:
A From the machine notional table of contents, find out the number of the table to consult:
B After finding the table of interest, find out the components to be requested and their order code.
To order the spare parts contact an authorised dealer by telephone, fax or e-mail. Please refer also the machine serial number.
Please note: to avoid any problems, order the spare parts correctly and completely.

DE - Den gewünschten Bestandteil und die gewünschten Informationen wie folgt herausfinden:
A Vom Abbildungsverzeichnis der Maschine die Nummer der gewünschten Tafel identifizieren:
B Nach Identifizieren der gewünschten Tafel, die zu bestellenden Bestandteile und den entsprechenden Auftragscode feststellen.
Zur Bestellung der Ersatzteile sich an einen autorisierten Händler per Telefon, Fax oder E-Mail wenden, und auch die Seriennummer der Maschine übertragen.
HINWEIS: Um Probleme zu vermeiden, die Ersatzteile auf ordnungsgemäße und vollständige Weise bestellen.

FR - Pour trouver la pièce et les informations souhaitées, accomplir les opérations ci-dessous :
A Sur la table des illustrations de la machine, localiser le numéro du tableau à consulter.
B Dès qu'on trouve le tableau souhaité, localiser les pièces détachées à commander ainsi que les codes de commande relatifs.
Pour commander les pièces détachées, contacter un distributeur agréé par téléphone, fax ou e-mail, en spécifiant également le numéro de série de la machine.
REMARQUE : Pour éviter tout problème, passer la commande des pièces détachées requises de manière correcte et complète.

FI - Etsi osa ja tarvitut tiedot seuraavasti:
A Tarkista laitteen numerohakemistosta luettavan taulukon numero.
B Kun olet tunnistanut tarvitsemasi taulukon, etsi tilattavat osat ja niiden tilauskoodi.
Tilaa varaosat puhelimella, faksilla tai sähköpostilla valtuutetulta jälleenmyyjältä. Muista ilmoittaa myös laitteen sarjanumero.
HUOM: jotta virheet vältetään, tilaa varaosat asianmukaisesti ja ilmoita kaikki tarvittavat tiedot.

NL - Ga als volgt te werk om het onderdeel en de gewenste informatie op te sporen:
A Identificeer het nummer van de tabel die geraadpleegd moet worden in de index van de afbeeldingen:
B Zoek, na identificatie van de tabel in kwestie, de aan te vragen onderdelen en hun bestelcode.
Richt u voor het bestellen van wisselstukken via tel., fax of e-mail tot een geautoriseerde verdeler, en geef eveneens het serienummer van de machine aan.
NB: Om misverstanden te vermijden, dient de bestelling van de wisselstukken correct en volledig geplaatst te worden.

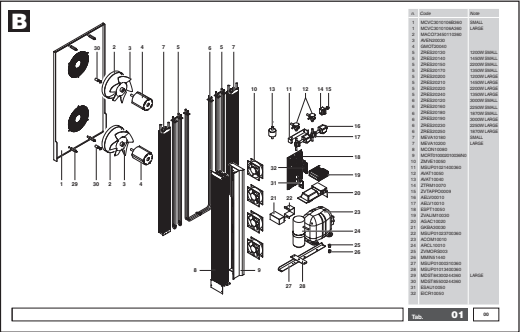
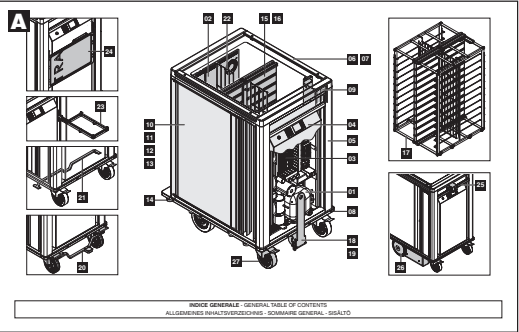
PL - W celu odnalezienia części i wymaganych informacji, należy postępować w następujący sposób:
A Na spisie rysunkowym maszyny, należy odnaleźć numer tablicy, z którą należy się zapoznać:
B Po odnalezieniu wymaganej tablicy, należy odnaleźć części do zamówienia oraz odpowiedni kod zamówienia.
W celu zamówienia części zamiennych, należy się zwrócić (telefonicznie lub przy użyciu poczty elektronicznej) do autoryzowanego dystrybutora, pamiętając, by podać również numer seryjny maszyny.
UWAGA: w celu uniknięcia nieporozumień, należy zamawiać części zamienne w sposób prawidłowy i kompletny.

PT - Para localizar o componente e a informação de interesse, efetue quanto indicado a seguir:
A No índice figurativo da máquina identifique o número de desenho a consultar:
B Identificado o desenho de interesse, localize os componentes a encomendar e o relativo código de pedido.
Para encomendar as peças sobressalentes entre em contato, por telefone, por fax ou por e-mail com um distribuidor autorizado, tomando o cuidado de informar também o número de matrícula da máquina.
Obs.: para evitar equívocos, efetue o pedido das peças sobressalentes de forma correta e completa.

RU - Для того чтобы получить информацию о компоненте, выполните следующие действия:
A В указателе рисунков машины посмотрите номер требуемого рисунка:
B На требуемом рисунке посмотрите детали, которые нужно заказать, и соответствующий код для заказа.
Для заказа деталей обращайтесь по телефону, факсу или электронной почте к официальному дистрибьютору, и не забудьте указать заводской номер машины.
Примечание: во избежание ошибок оформляйте заказ запасных деталей правильно и указывайте всю необходимую информацию.

ES - Para localizar el componente y la información de interés, proceder de la siguiente manera:
A Del índice figurativo de la máquina determinar el número de tabla que consultar:
B Una vez encontrada la table de interés, localizar los componentes que solicitar y el código de pedido correspondiente.
Para pedir los recambios contacte, por telf, fax o e-mail a un distribuidor autorizado, prestando atención a indicar también el número de matrícula de la máquina.
NB: para evitar descuidos, efectuar el pedido de los recambios de manera correcta y completa.

DK - For at finde frem til de relevante komponenter og oplysninger går man frem som følger:
A Find nummeret på den relevante liste ud fra billedfortegnelsen:
B Når den ønskede liste er fundet, find da frem til de komponenter, der skal bestilles, og den tilhørende bestillingskode.
Reservedelene bestilles ved at kontakte en autoriseret forhandler pr. telefon, fax eller e-mail; husk at oplyse maskinens serienummer.
OBS! Sørg for at foretage bestillingen af reservedelene korrekt og fuldstændigt. Dette vil undgå forsinkelser og fejltagelser.



**COME CONSULTARE
IL CATALOGO E
ORDINARE I RICAMBI**

How to consult the catalogue and order the spare parts
Verwendung des Katalogs und Bestellung der Ersatzteile
Comment consulter le catalogue et commander les pièces détachées
Luettelon lukeminen ja varaosien tilaus

Hoe de kataloog raadplegen en wisselstukken bestellen
W jaki sposób przeglądać katalog i zamawiać części zamienne
Como consultar o catálogo e encomendar as peças sobressalentes
Как просматривать каталог и заказывать запасные детали

Cómo consultar el catálogo y pedir los recambios
Sådan anvendes kataloget og bestilles reservedelene

IT - Nelle tavole potrebbero essere riportati alcuni dei simboli raffigurati.

GB - The tables may contain some of the shown symbols. Symbole finden.

DE - In den Tafeln können Sie einige der gezeigten Symbole finden.

FR - Les tableaux pourraient contenir quelques-uns des symboles ci-dessous.

FI - Kaavioissa saattaa olla joitakin seuraavista symboleista.

NL - De tabellen kunnen sommige van de aangegeven symbolen bevatten.

PL - Na tablicach mogą być zamieszczone symbole.

PT - Nos desenhos poderão estar indicados alguns dos símbolos representados.

RU - На рисунках могут быть указаны некоторые из изображенных символов.

ES - En las tablas pueden estar indicados algunos de los símbolos representados.

DK - Listerne kan indeholde nogle af de viste symboler.



IT - SERVIZIO ASSISTENZA - Comunicare codice e numero matricola della macchina

GB - ASSISTANCE SERVICE - Report code and serial number of the machine

DE - KUNDENDIENST - Teilen Sie den Code und die Seriennummer der Maschine mit

FR - SERVICE APRÈS-VENTE - Communiquer le code et le numéro de matricule de la machine

FI - HUOLTOPALVELUN - Anna laitteen koodi ja sarjanumero

NL - SERVICE - Deel code en serienummer van de machine mee

PL - SERWIS TECHNICZNY - Podać kod i numer seryjny maszyny

PT - SERVIÇO DE ASSISTÊNCIA - Comunique o código e o número de matrícula da máquina

RU - СЛУЖБА ТЕХНИЧЕСКОЙ ПОДДЕРЖКИ - Сообщите код и заводской номер машины

ES - SERVICIO DE ASISTENCIA - Comunicar código y número de matrícula de la máquina

DK - SERVICECENTER - Oplys maskinens kode og serienummer



IT - CODICE DI RAGGRUPPAMENTO

GB - GROUP CODE

DE - GRUPPIERUNGSNUMMER

FR - CODE DE GROUPEMENT

FI - RYHMÄKOODI

NL - GROEPERINGSCODE

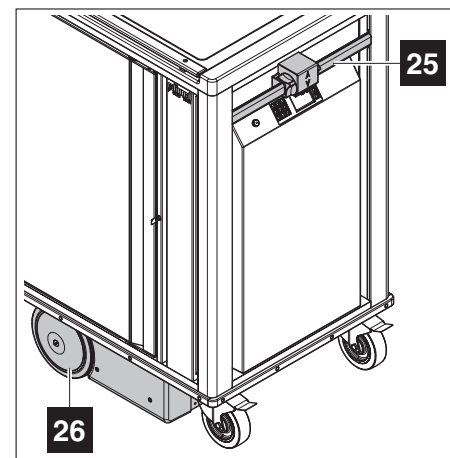
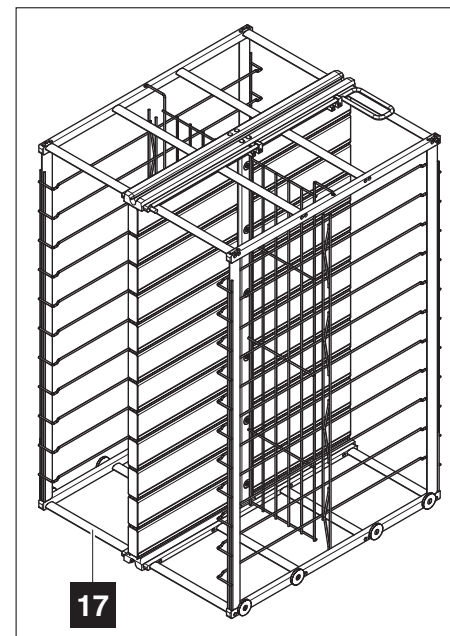
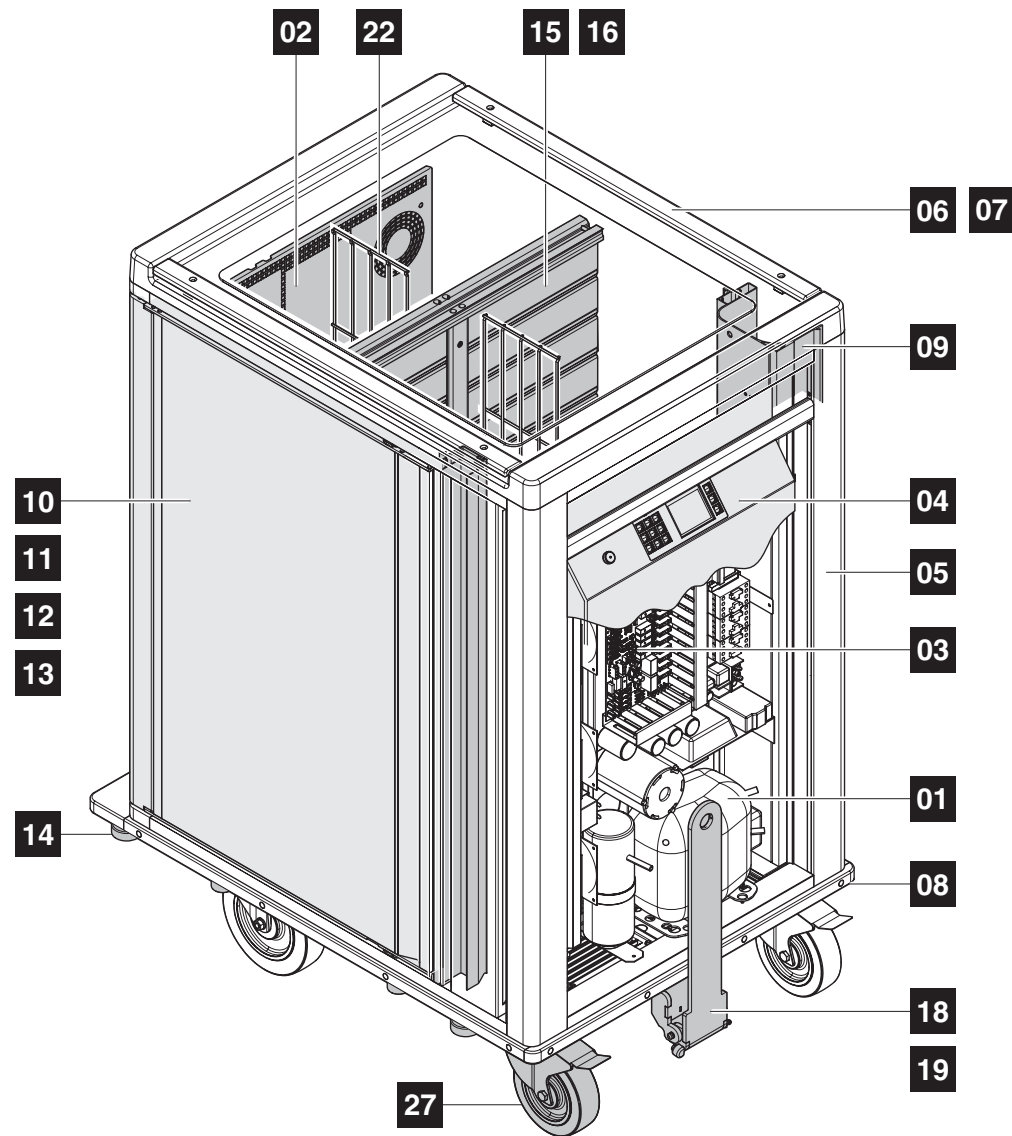
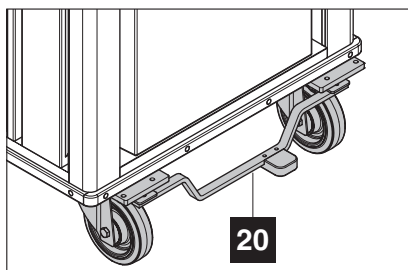
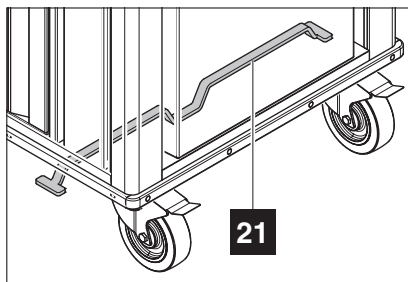
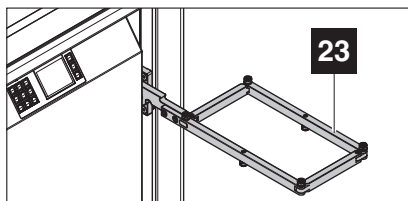
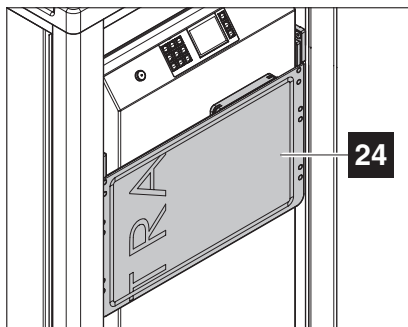
PL - KOD POGRUPOWANIA

PT - CÓDIGO DE AGRUPAMENTO

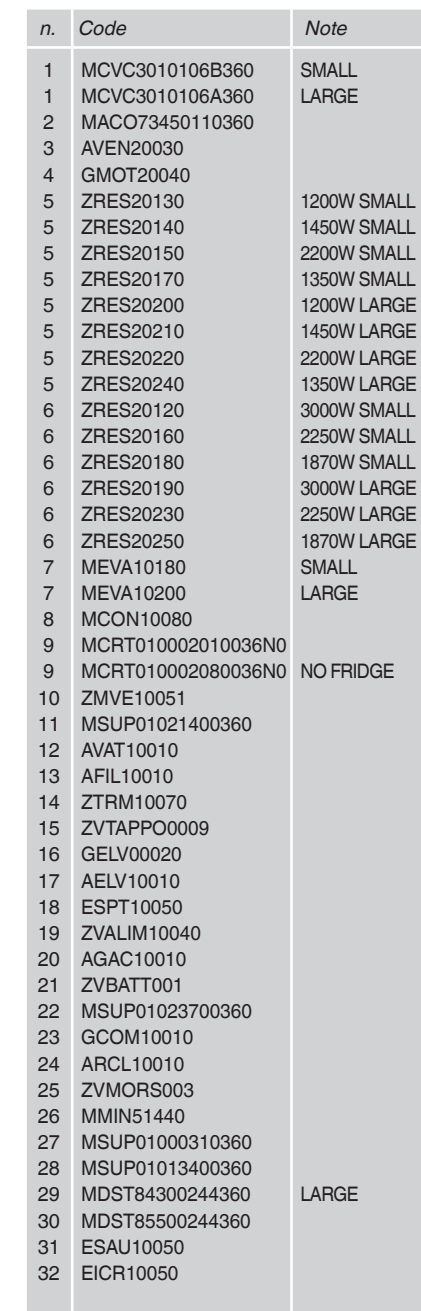
RU - КОД КАТЕГОРИИ

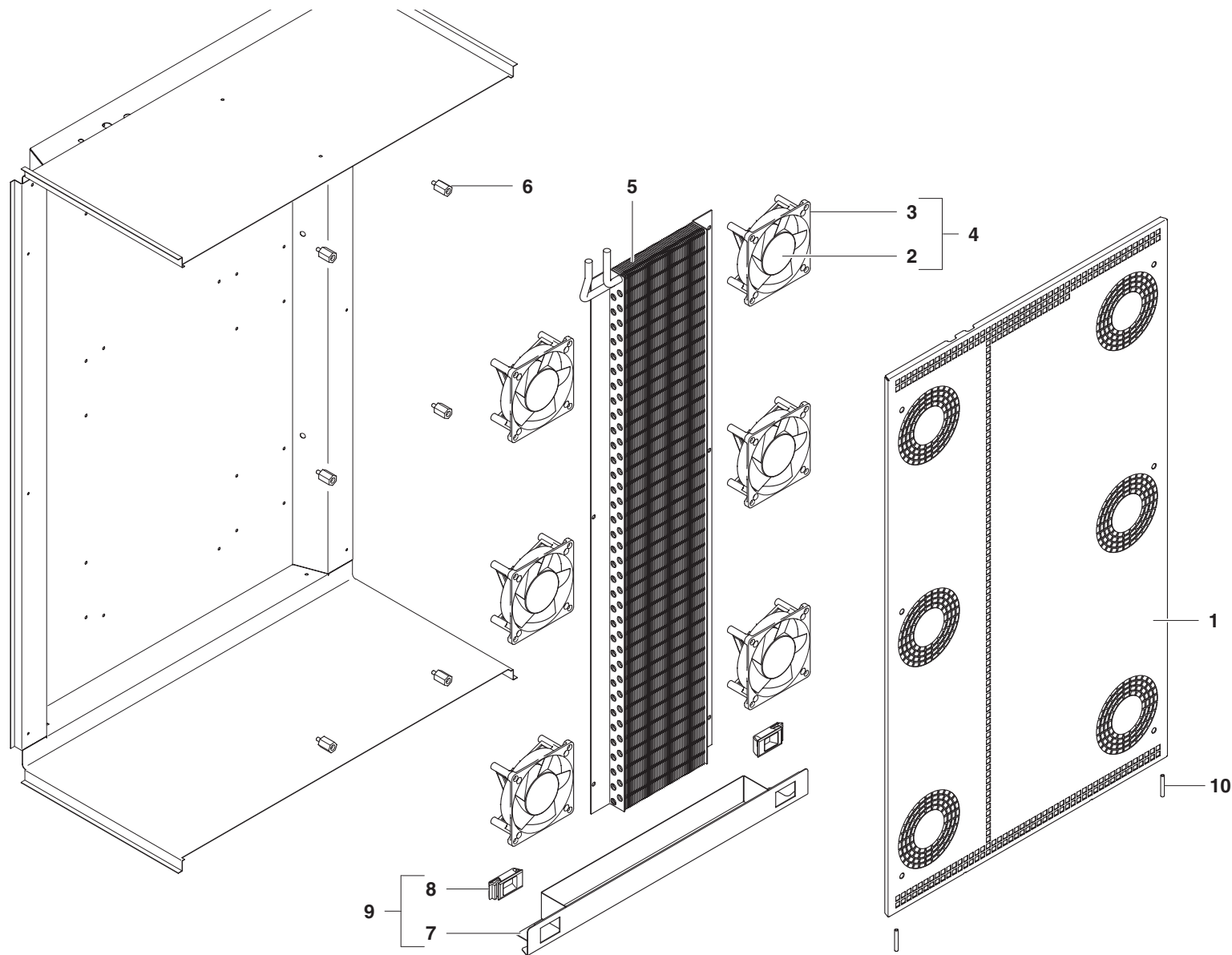
ES - CÓDIGO DE AGRUPAMIENTO

DK - GRUPPERINGSKODE



INDICE GENERALE - GENERAL TABLE OF CONTENTS - ALLGEMEINES INHALTSVERZEICHNIS - SOMMAIRE GENERAL - SISÄLTÖ
ALGEMENE INDEX - SPIS OGÓLNY - ÍNDICE GERAL - ОБЩИЙ УКАЗАТЕЛЬ - ÍNDICE GENERAL - HOVEDFORTEGNELSE





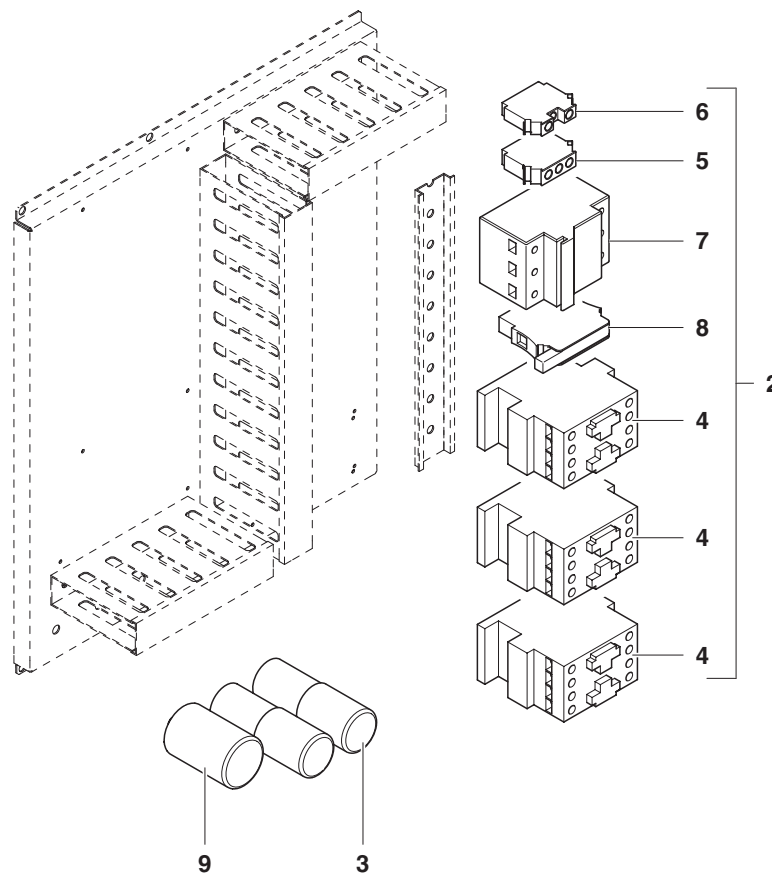
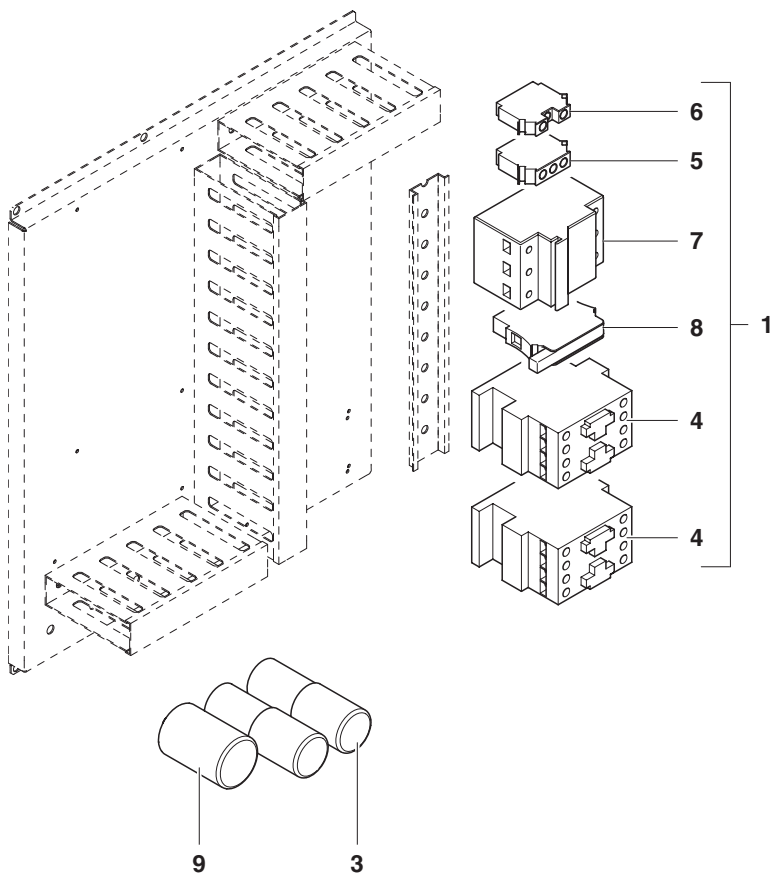
n.	Code	Note
1	MCVF3010206B360	SMALL
1	MCVF3010206A360	LARGE
2	ZMVE10060	
3	MSUP15003600360	
4	GMVE10060	
5	MEVA10170	SMALL
5	MEVA10190	LARGE
6	MDST85400256360	
7	MACO41000106360	
8	AECV20070	
9	GACO3340000N360	
10	MPCR02010007360	

Tab.

02

00

TMTS00050001 V.1
06/16



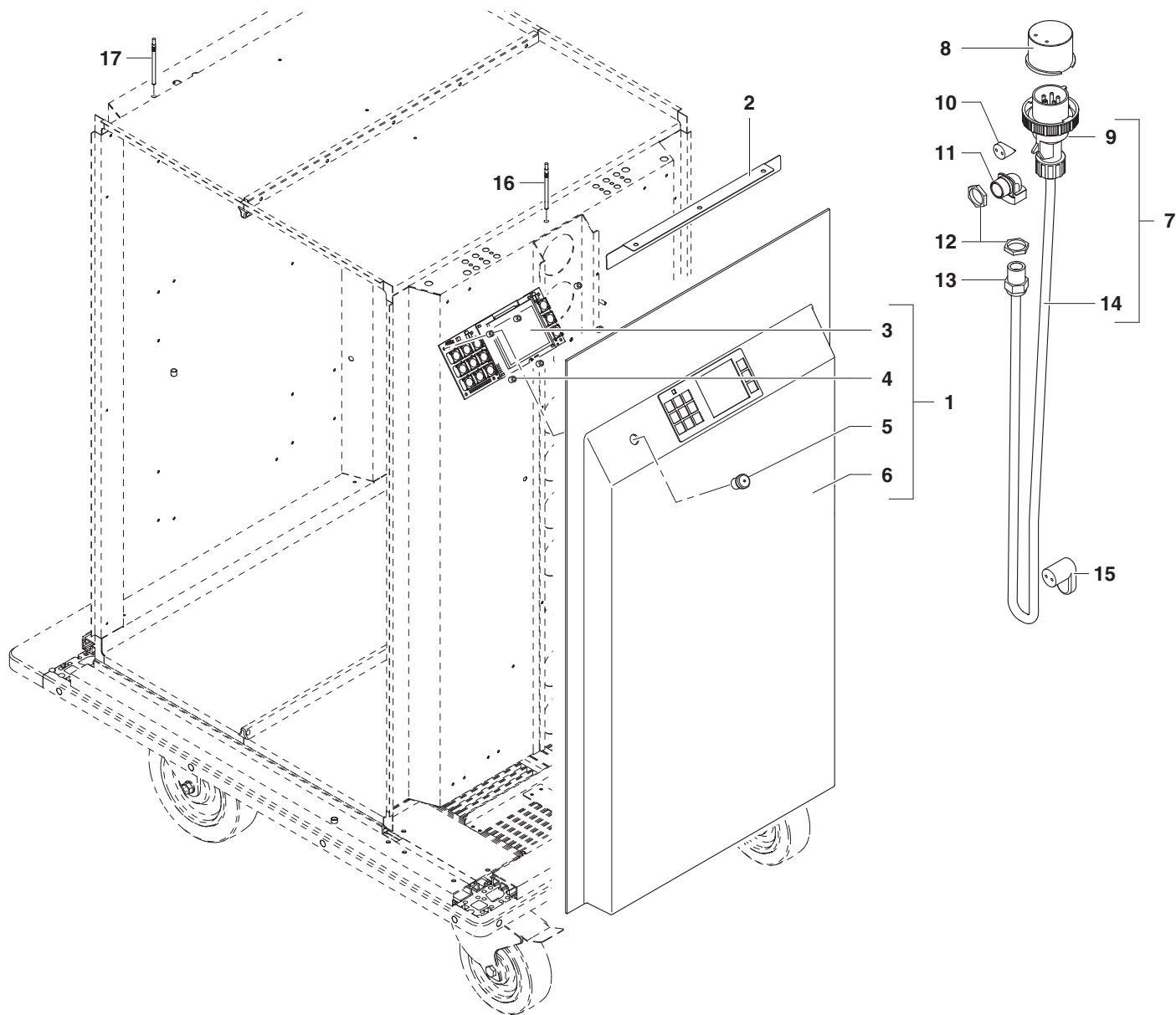
n.	Code	Note
1	GQEL30081	400V 3N~ 400V 3N~ MULTIPOWER
2	GQEL30091	
3	ZMOT20040	
4	ZTEL10060	
5	ZVMORS002	
6	ZVMORS001	
7	ZVSEZIO005	
8	ZVSEZIO002	
9	ZVFILTR001	

Tab.

03

00

TMTS00050001 V.1
06/16



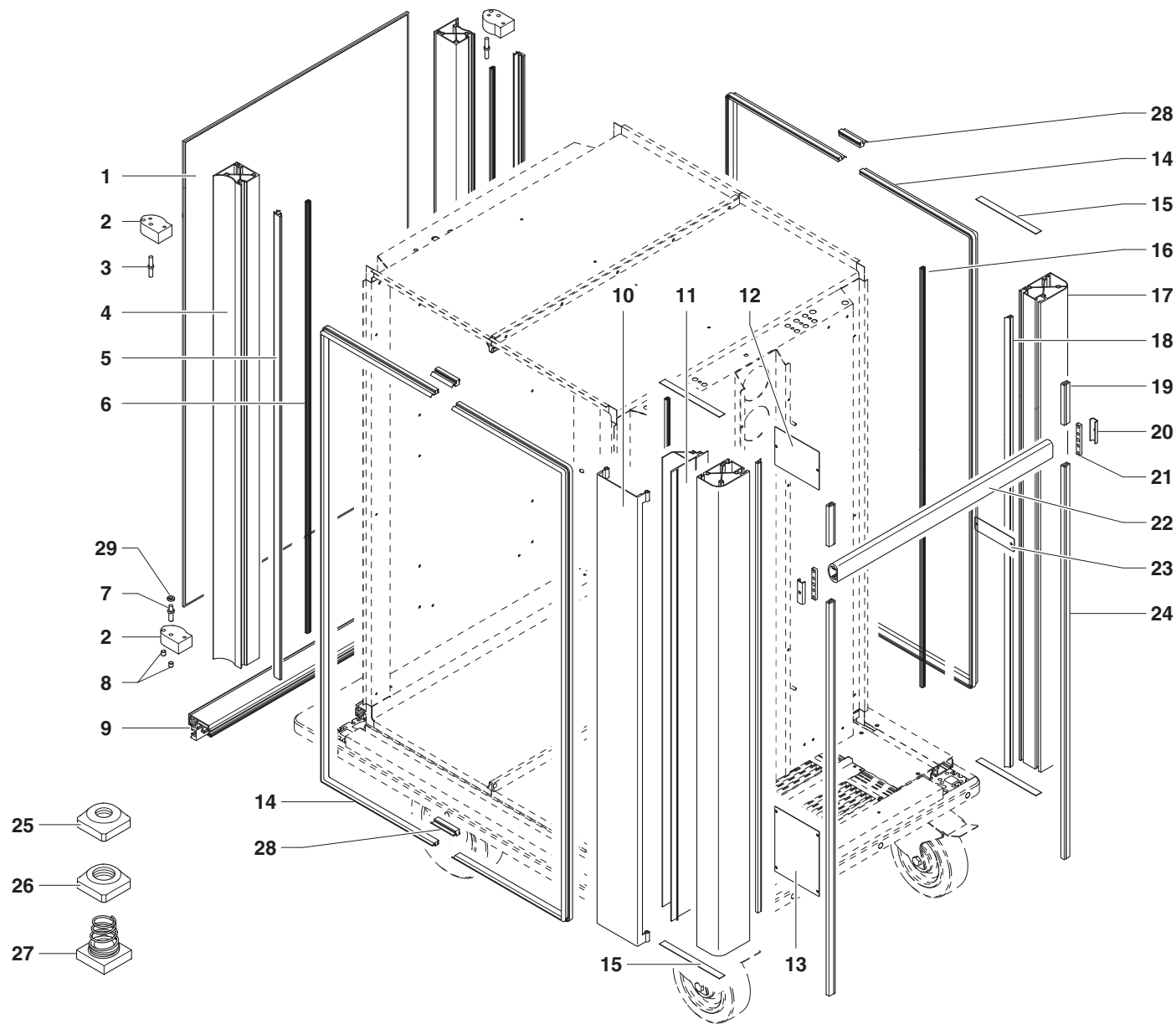
n.	Code	Note
1		
2	MANG34512100360	
3	ECPU10050	
4	MDST26000260360	
5	GSON10031	
6		
7		
8	MSUP10023900360	230V 1F 16A
8	MSUP10024000360	230V 1F 32A
8	MSUP10024100360	230V 3F 16A
8	MSUP10023300360	400V 3F 16A
8	MSUP10024400360	230V 3F 32A
9	ZSPN401101202	230V 1F 16A
9	ZSPN401101302	230V 1F 32A
9	ZSPN401102202	230V 3F 16A
9	ZSPN401103302	230V 3F 32A
9	ZSPN401202202	400V 3F 16A
10	MDST82000957360	
11	ZVPRECA008	
12	ZVPRECA007	
13	ZVPRECA006	
14	MCAVE01C0A01000	1F 16A LARGE
14	MCAVE01C0B01000	1F 16A SMALL
14	MCAVE03C0A01000	1F 32A LARGE
14	MCAVE03C0B01000	1F 32A SMALL
14	MCAVE02C0A01000	1F 20A LARGE
14	MCAVE02C0B01000	1F 20A SMALL
14	MCAVE01A0A01000	3F+N 16A LARGE
14	MCAVE01A0B01000	3F+N 16A SMALL
14	MCAVE01B0A01000	3F 16A LARGE
14	MCAVE01B0B01000	3F 16A SMALL
14	MCAVE03B0A01000	3F 32A LARGE
14	MCAVE03B0B01000	3F 32A SMALL
15	MACO37001013360	
16	GSON10011	
17	GSON10021	

Tab.

04

00

TMTS00050001 V.1
06/16



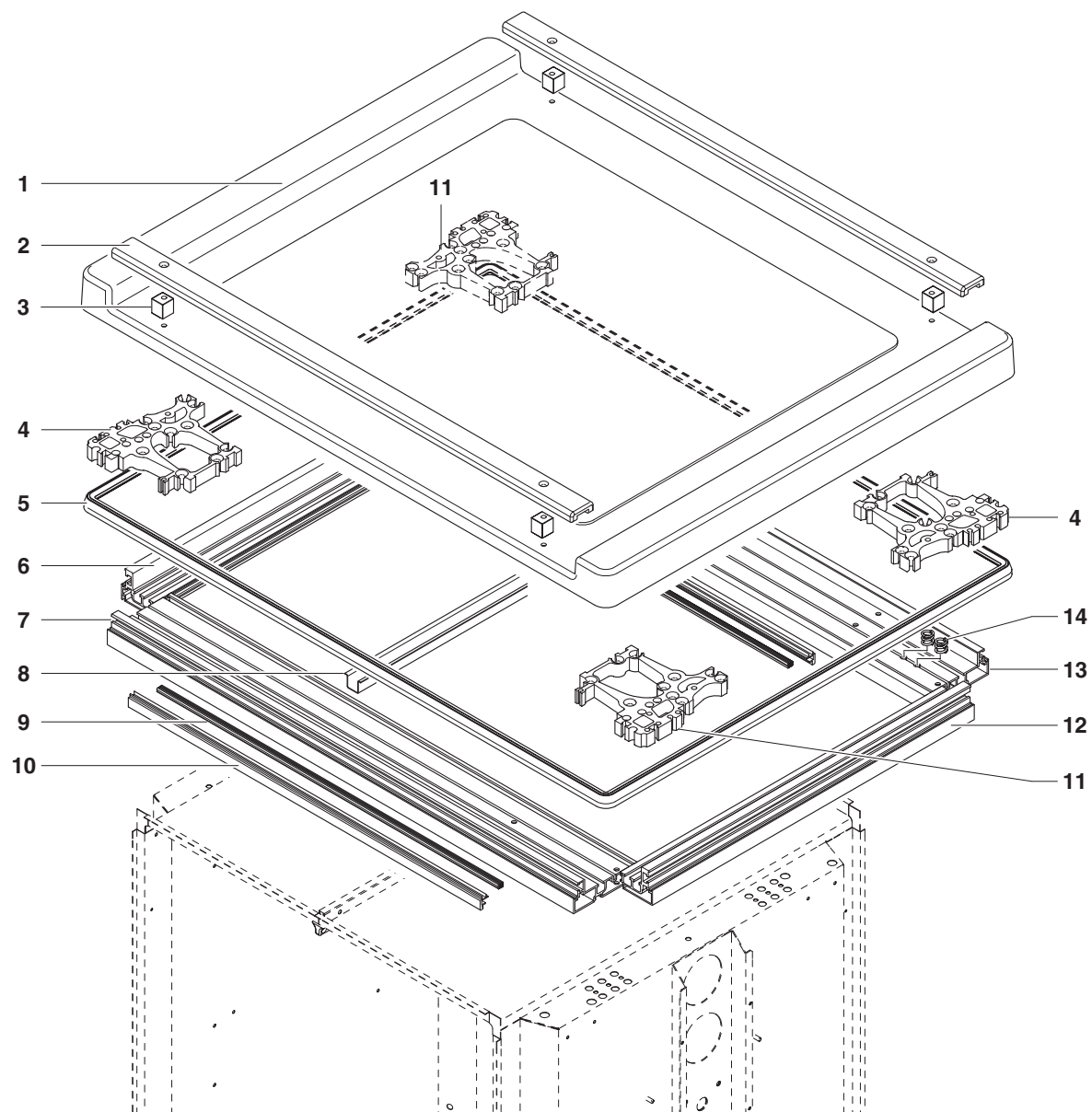
n.	Code	Note
1	MTES307B0029360	SMALL
1	MTES307A0029360	LARGE
2	MMIN52010	
3	MPFG05010005360	
4	MFIA302B0826360	SMALL
4	MFIA302A0826360	LARGE
5	MANG33413226360	SMALL
5	MANG33513226360	LARGE
6	MGUA02171113B19360	SMALL
6	MGUA02171113A19360	LARGE
7	MPFG06010005360	
8	AVST10808	
9	MTES302N1126360	
10	MANG33115230360	SMALL RAT
10	MANG33115226360OS2	SMALL
10	MANG34015230360	LARGE RAT
10	MANG34015226360OS2	LARGE
11	MANG32918226360	SMALL
11	MANG33818226360	LARGE
12	MCRT010401010736A0	LARGE
13	MCRT010401010836A0	LARGE
14	MGUA02170516B18360	SMALL
14	MGUA02170516A18360	LARGE
15	MANG32712226360	
16	MGUA02171113B19360	SMALL
17	MFIA302B0726360	SMALL
17	MFIA302A0726360	LARGE
18	MGUA03300113B20360	SMALL
18	MGUA03300113A20360	LARGE
19	MGUA03301412B26360	SMALL
19	MGUA03301412A26400	LARGE
20	MANG34700110360	
21	MANG33600226360	
22	MMSP2110226N360	
23	MANG34600100360	
24	MGUA03301411N26360	
25	ADAI7006	M6
26	ADAI7008	M8
27	GMIN53060	M8
28	MGUA02170515N27360	
29	MMIN53020	

Tab.

05

00

TMTS00050001 V.1
06/16



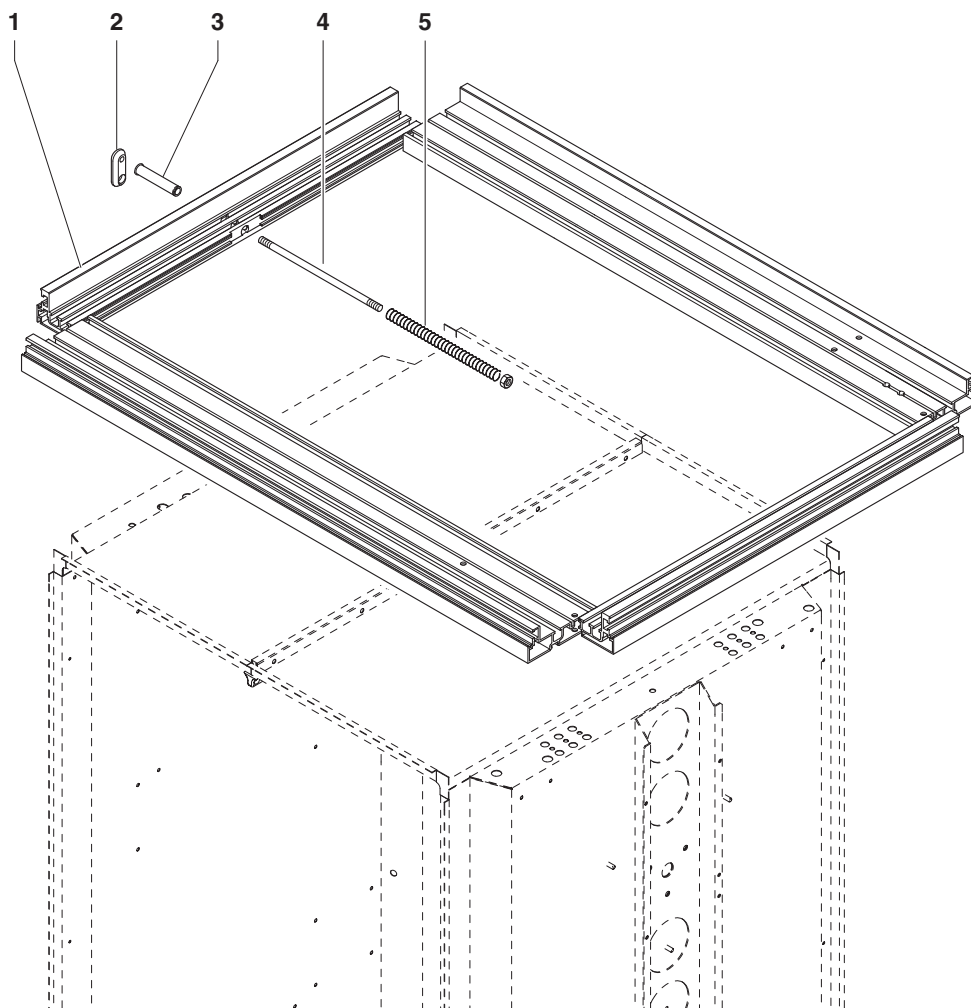
n.	Code	Note
1	MCOS305N0028360	YELLOW
1	MCOS305N0534360	BLUE
2	MBRR01000226360	
3	MBRR02000226360	
4	MDST60190215360	RIGHT
5	MGUA03130300N25360	
6	MTES302N1126360	
7	MFIA302N1726360	2 DOORS
7	MFIA302N1726420	4 DOORS
8	MANG30414100360	
9	MGUA02171114N19360	
10	MANG32112226360	
11	MDST60180215360	LEFT
12	MTES302N1026360	
13	MFIA302N1926360	2 DOORS
13	MFIA302N1926420	4 DOORS
14	MMOL01010312011130	

Tab.

06

00

TMTS00050001 V.1
06/16



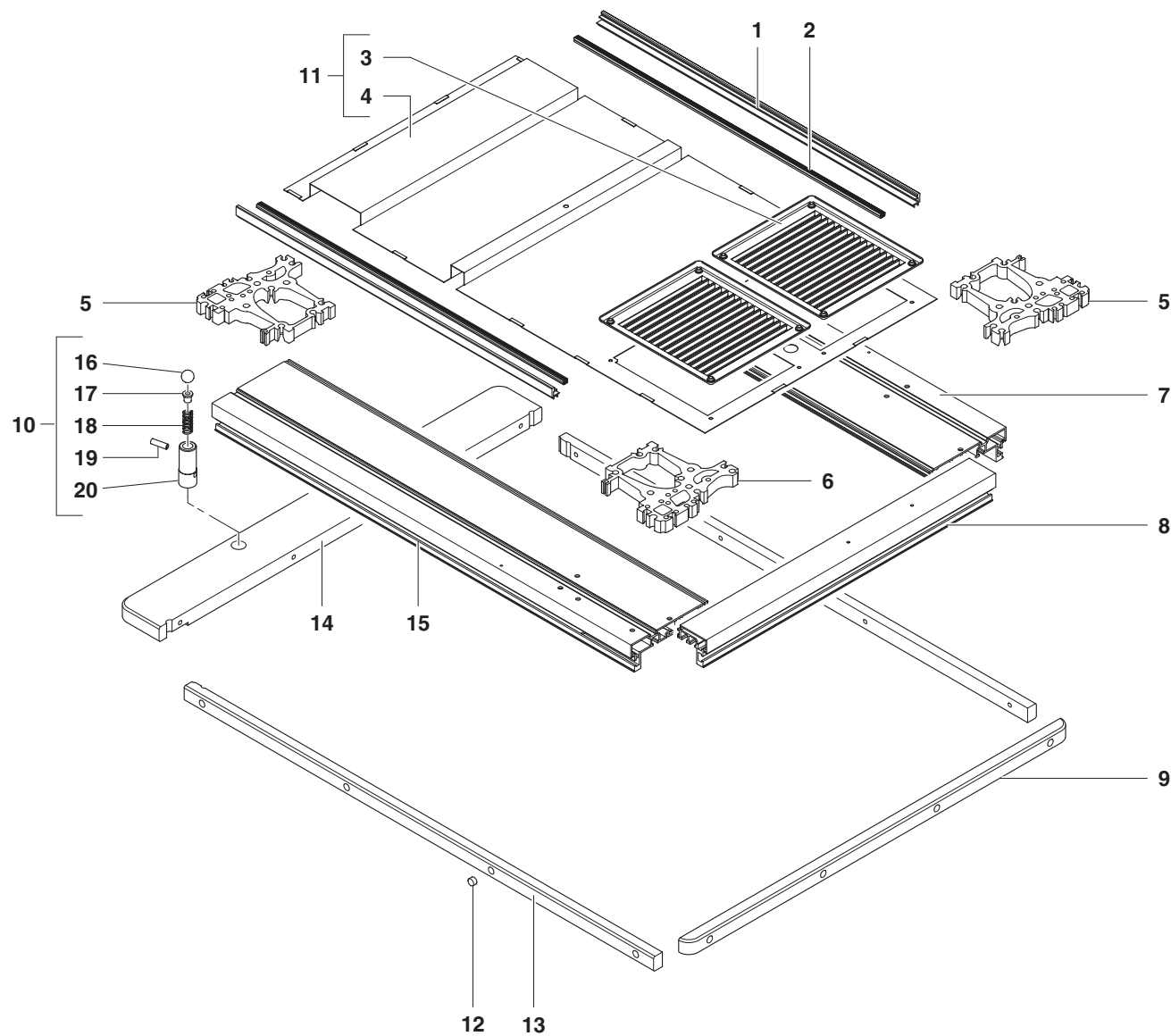
n.	Code	Note
1	MTES302N1126440	2 DOORS
1	MTES302N1126450	4 DOORS
2	MMIN52360	
3	MMIN52370	
4	MPFG00010007440	
5	MMOL01011220108200	

Tab.

07

00

TMTS00050001 V.1
06/16



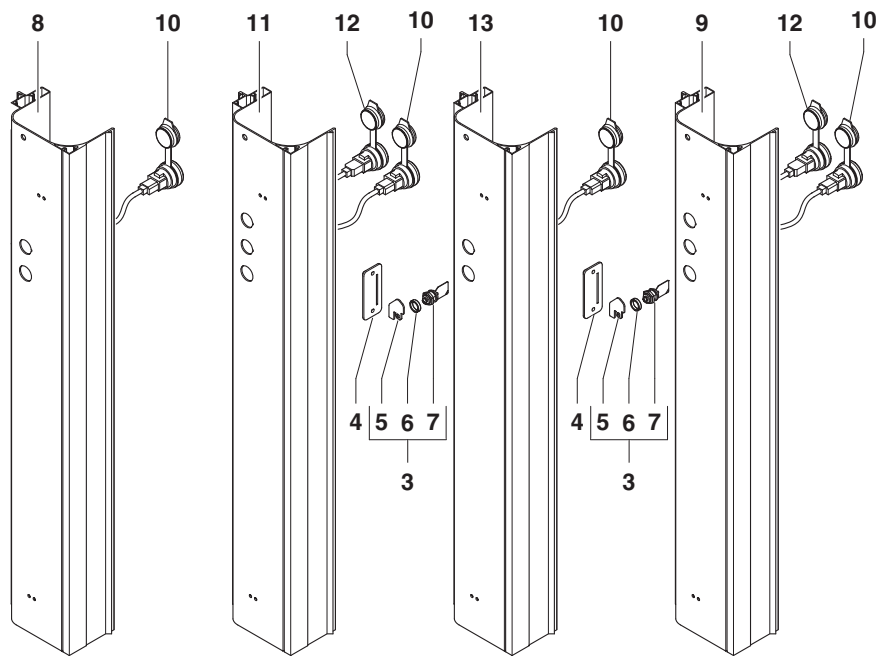
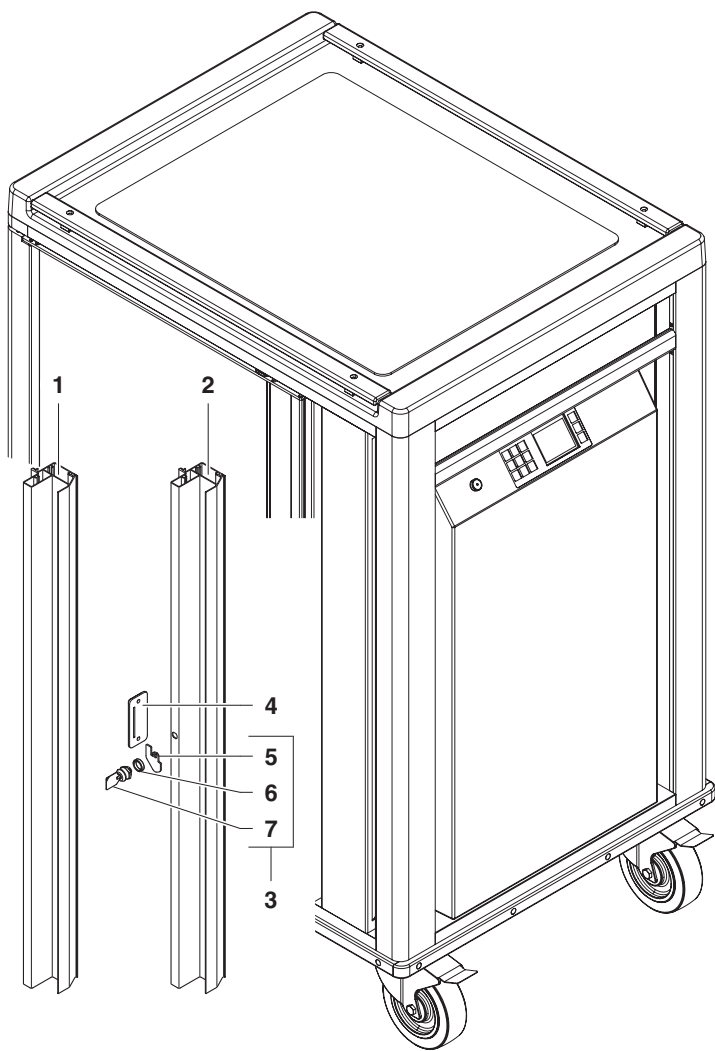
n.	Code	Note
1	MANG32112226360	LEFT RIGHT 2 DOORS 4 DOORS
2	MGUA02171114N19360	
3	AGEL100010	
4	MPVA30060	
5	MDST60180215360	
6	MDST60190215360	
7	MFIA302N2026360	
7	MFIA302N2026420	
8	MTES302N1026360	
9	MACO67370415360	
10	GACO3320000N360	2 DOORS 4 DOORS 2 DOORS 4 DOORS
11	GPVA30060	
12	MMIN52020	
13	MACO67350415360	
14	MACO67360415360	
14	MACO67360415420	
15	MFIA302N1826360	
15	MFIA302N1826420	
16	MMIN52130	
17	AFEV10110	
18	MMOL01010517103170	
19	AFEV10120	
20	MFPO00022604360	

Tab.

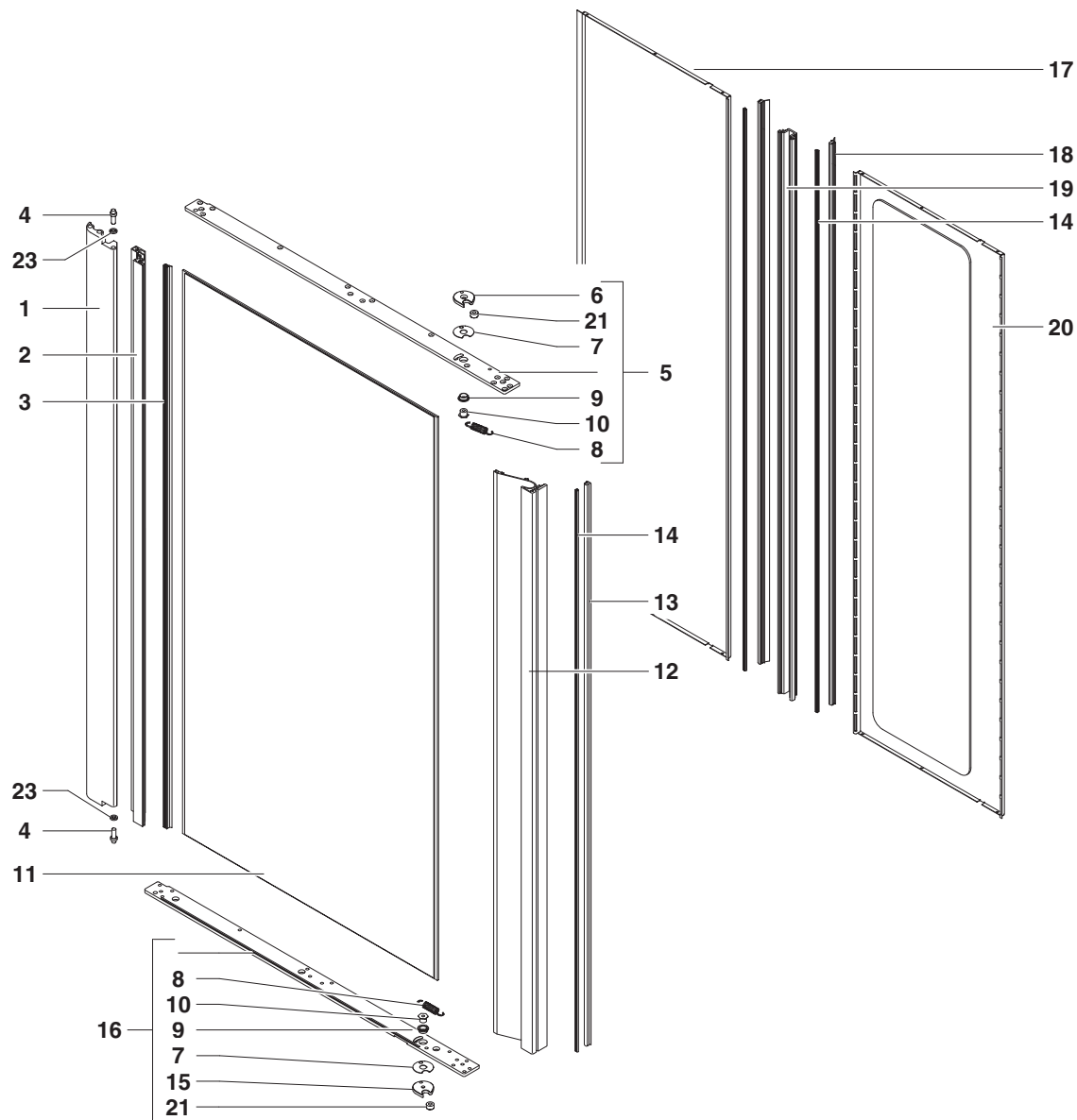
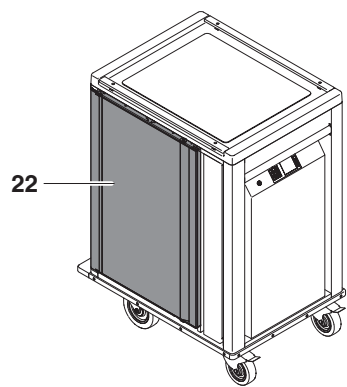
08

00

TMTS00050001 V.1
06/16



n.	Code	Note
1	MANG32920226360	SMALL
1	MANG33820226360	LARGE
2	MANG33220226360	SMALL
2	MANG34120226360	LARGE
3	GECV10010	
4	MCRT020701160036N0	
5	MMIN52030	
6	MDST86500148360	
7	AECV20080	
8	MANG32816226361	SMALL
8	MANG33716226361	LARGE
9	MANG33316226361	SMALL
9	MANG34416226361	LARGE
10	GVCONNT0470-10	USB
11	MANG34816226361	SMALL
11	MANG34916226361	LARGE
12	GVCONNT0480	RJ 45
13	MANG34316226361	SMALL
13	MANG34216226361	LARGE



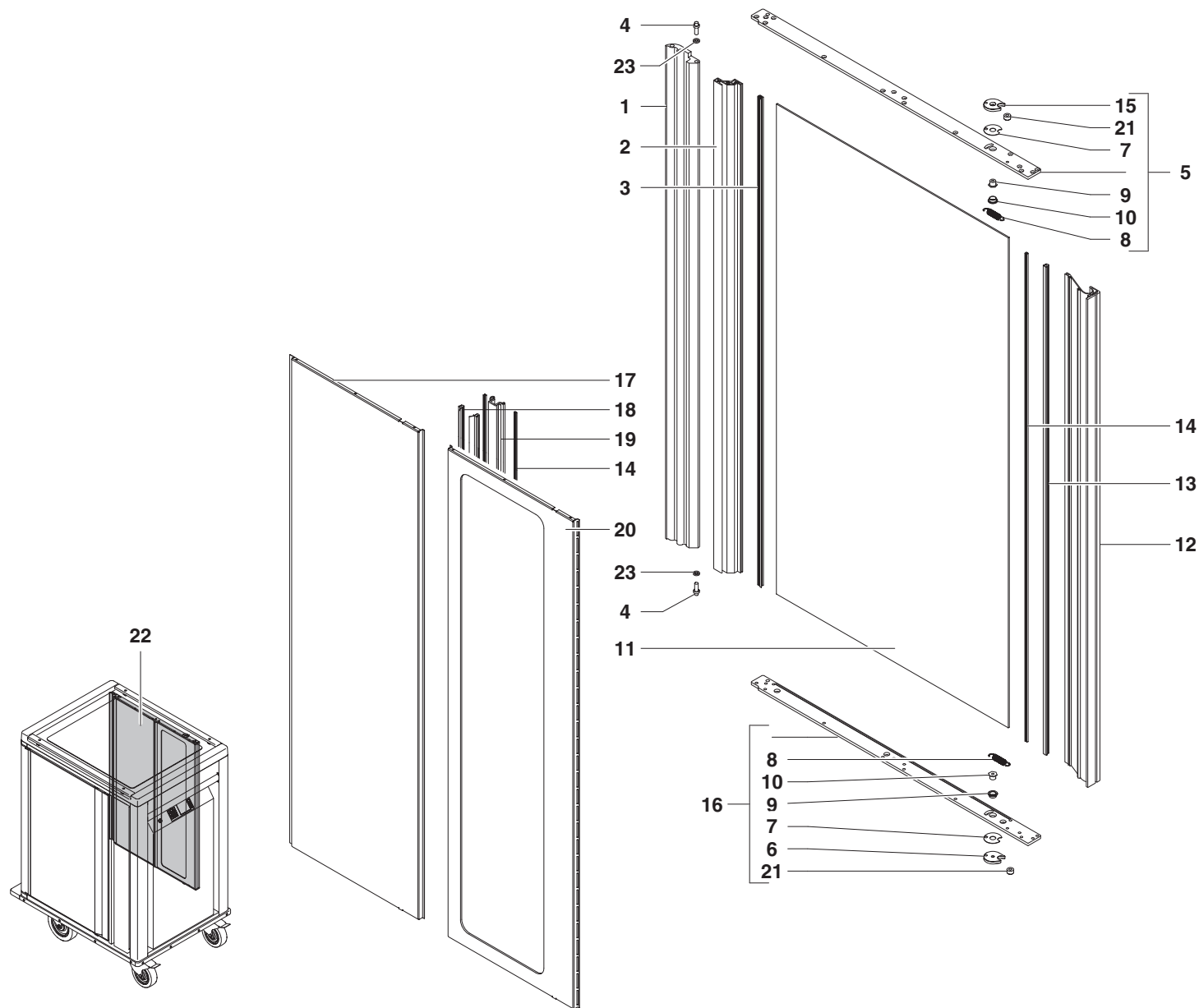
n.	Code	Note
1	MANG33000226360	SMALL
1	MANG33900226360	LARGE
2	MPPC3022600B360	SMALL
2	MPPC3022600A360	LARGE
3	MGUA02171202B24360	SMALL
3	MGUA02171202A24360	LARGE
4	MPFG15010005420	
5	GCSR3F060001100360	
6	MMIN51890	
7	MDST84601748000	
8	MMOL02011115114150	
9	ACUS40010	
10	MDST24500148000	
11	MPPE3070029B360	SMALL
11	MPPE3070029A360	LARGE
12	GPPS3B030002360	SMALL LEFT
12	GPPS3A030002360	LARGE LEFT
13	MGUA02171201B21360	SMALL
13	MGUA02171201A21360	LARGE
14	MGUA02171313B22360	SMALL
14	MGUA02171313A22360	LARGE
15	MMIN51880	
16	GCSR3F080001100360	
17	GPIS3BIF0201000360	SMALL
17	GPIS3AIF0201000360	LARGE
18	MGUA02170415B23360	SMALL
18	MGUA02170415A23360	LARGE
19	MCVPC022600B360	SMALL
19	MCVPC022600A360	LARGE
20	GPIS3BIC0201000360	SMALL
20	GPIS3AIC0201000360	LARGE
21	MMIN51990	
22	GPRF306B3626070	SMALL LEFT
22	GPRF306A3626070	LARGE LEFT
23	MMIN53040	

Tab.

10

00

TMTS00050001 V.1
06/16



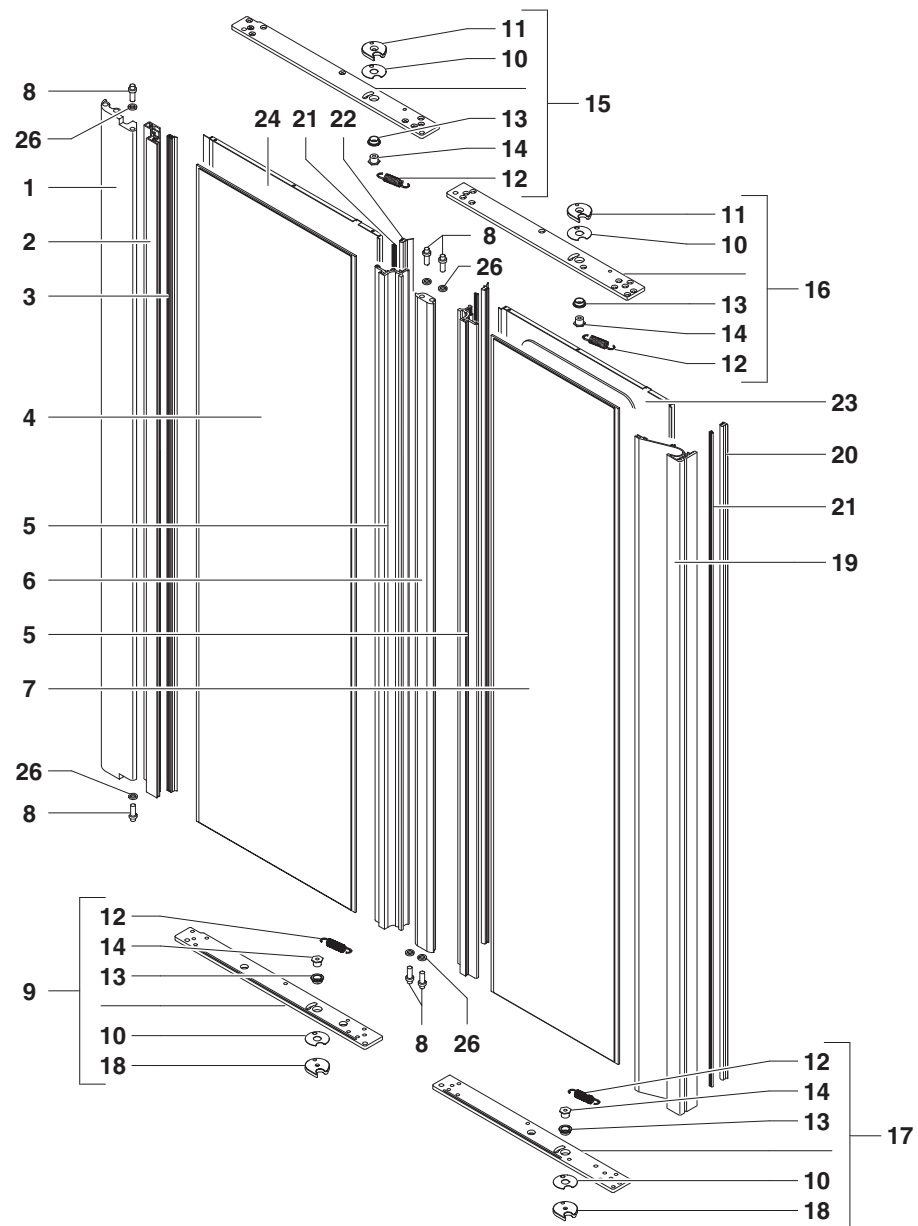
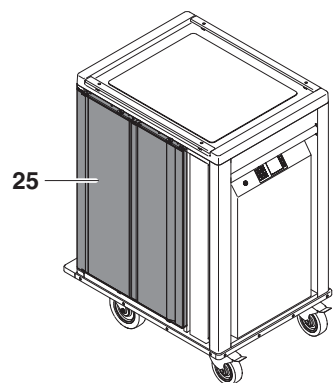
n.	Code	Note
1	MANG33000226360	SMALL
1	MANG33900226360	LARGE
2	MPPC3022600B360	SMALL
2	MPPC3022600A360	LARGE
3	MGUA02171202B24360	SMALL
3	MGUA02171202A24360	LARGE
4	MPFG15010005420	
5	GCSR3F050001100360	
6	MMIN51890	
7	MDST84601748000	
8	MMOL02011115114150	
9	ACUS40010	
10	MDST24500148000	
11	MPPE3070029B360	SMALL
11	MPPE3070029A360	LARGE
12	GPPS3B030001360	SMALL RIGHT
12	GPPS3A030001360	LARGE RIGHT
13	MGUA02171201B21360	SMALL
13	MGUA02171201A21360	LARGE
14	MGUA02171313B22360	SMALL
14	MGUA02171313A22360	LARGE
15	MMIN51880	
16	GCSR3F070001100360	
17	GPIS3BIF0201000360	SMALL
17	GPIS3AIF0201000360	LARGE
18	MGUA02170415B23360	SMALL
18	MGUA02170415A23360	LARGE
19	MCVPC022600B360	SMALL
19	MCVPC022600A360	LARGE
20	GPIS3BIC0201000360	SMALL
20	GPIS3AIC0201000360	LARGE
21	MMIN51990	
22	GPRF307B3626070	SMALL RIGHT
22	GPRF307A3626070	LARGE RIGHT
23	MMIN53040	

Tab.

11

00

TMTS00050001 V.1
06/16



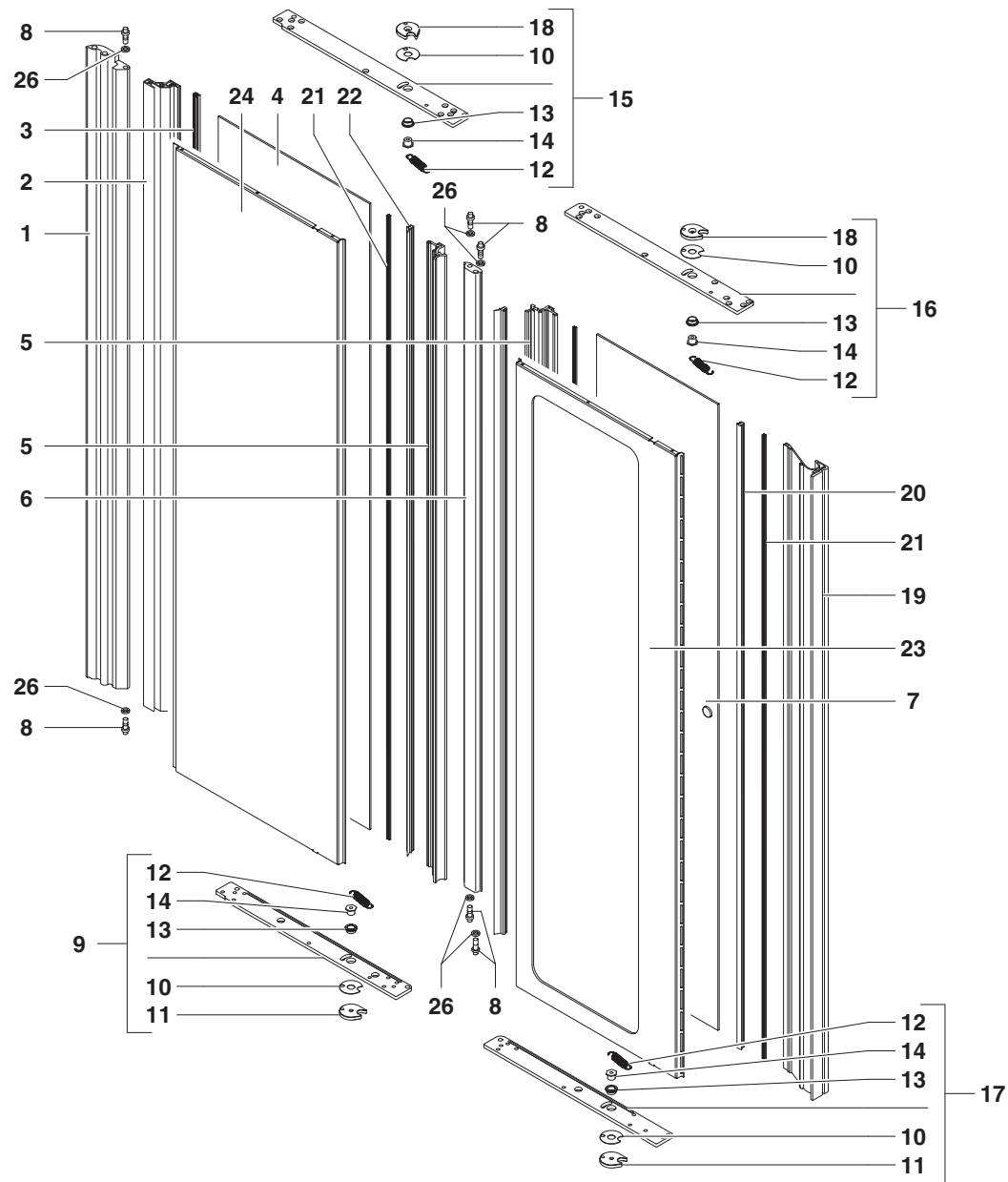
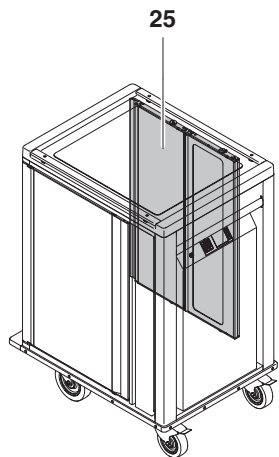
n.	Code	Note
1	MANG33000226360	SMALL
1	MANG33900226360	LARGE
2	MPPC3022600B360	SMALL
2	MPPC3022600A360	LARGE
3	MGUA02171202B24360	SMALL
3	MGUA02171202A24360	LARGE
4	GPIS3BEF0303000420	SMALL
4	GPIS3AEF0303000420	LARGE
5	MPPC3022615B420	SMALL
5	MPPC3022615A420	LARGE
6	MCVPC022600B420	SMALL
6	MCVPC022600A420	LARGE
7	GPIS3BEC0303000420	SMALL
7	GPIS3AEC0303000420	LARGE
8	MPFG15010005420	
9	GCSR3F080001100420	
10	MDST84601748000	
11	MMIN51890	
12	MMOL02011115114150	
13	ACUS40010	
14	MDST24500148000	
15	GCSR3F060001100420	
16	GCSR3C060001100420	
17	GCSR3C080001100420	
18	MMIN51880	
19	GPPS3B030002360	SMALL
19	GPPS3A030002360	LARGE
20	MGUA02171201B21360	SMALL
20	MGUA02171201A21360	LARGE
21	MGUA02171313B22360	SMALL
21	MGUA02171313A22360	LARGE
22	MGUA02170415B23360	SMALL
22	MGUA02170415A23360	LARGE
23	GPIS3BIC0201000360	SMALL
23	GPIS3AIC0201000360	LARGE
24	GPIS3BIF0201000360	SMALL
24	GPIS3AIF0201000360	LARGE
25	GPRF306B4226070	SMALL LEFT
25	GPRF306A4226070	LARGE LEFT
26	MMIN53030	1mm
26	MMIN53040	2mm
26	MMIN53050	3mm

Tab.

12

00

TMTS00050001 V.1
06/16



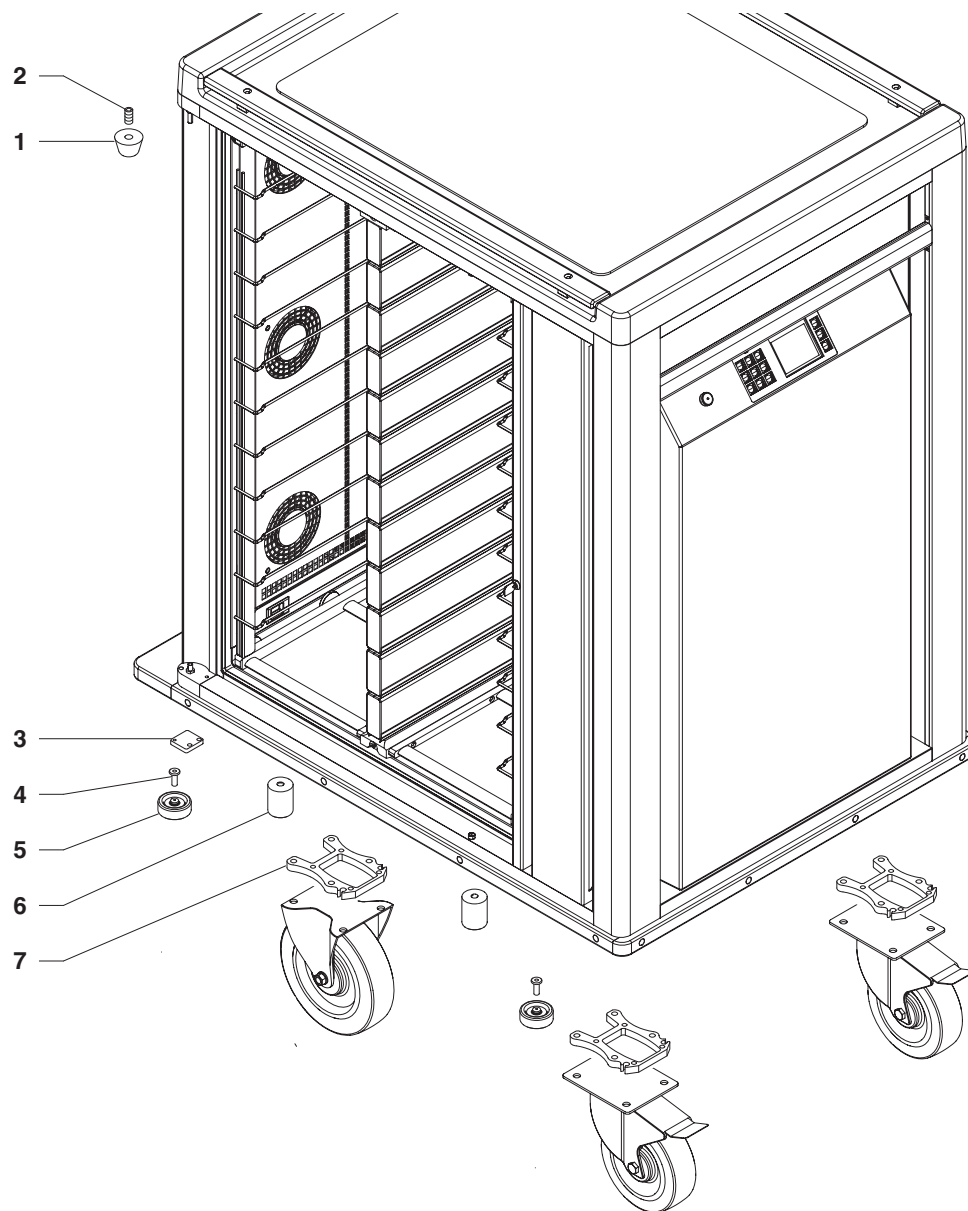
n.	Code	Note
1	MANG33000226360	SMALL
1	MANG33900226360	LARGE
2	MPPC3022600B360	SMALL
2	MPPC3022600A360	LARGE
3	MGUA02171202B24360	SMALL
3	MGUA02171202A24360	LARGE
4	GPIS3BEF0303000420	SMALL
4	GPIS3AEF0303000420	LARGE
5	MPPC3022615B420	SMALL
5	MPPC3022615A420	LARGE
6	MCVPC022600B420	SMALL
6	MCVPC022600A420	LARGE
7	GPIS3BEC0303000420	SMALL
7	GPIS3AEC0303000420	LARGE
8	MPFG15010005420	
9	GCSR3F070001100420	
10	MDST84601748000	
11	MMIN51890	
12	MMOL02011115114150	
13	ACUS40010	
14	MDST24500148000	
15	GCSR3F050001100420	
16	GCSR3C050001100420	
17	GCSR3C070001100420	
18	MMIN51880	
19	GPPS3B030001360	SMALL
19	GPPS3A030001360	LARGE
20	MGUA02171201B21360	SMALL
20	MGUA02171201A21360	LARGE
21	MGUA02171313B22360	SMALL
21	MGUA02171313A22360	LARGE
22	MGUA02170415B23360	SMALL
22	MGUA02170415A23360	LARGE
23	GPIS3BIC0201000360	SMALL
23	GPIS3AIC0201000360	LARGE
24	GPIS3BIF0201000360	SMALL
24	GPIS3AIF0201000360	LARGE
25	GPRF307B4226070	SMALL RIGHT
25	GPRF307A4226070	LARGE RIGHT
26	MMIN53030	1mm
26	MMIN53040	2mm
26	MMIN53050	3mm

Tab.

13

00

TMTS00050001 V.1
06/16



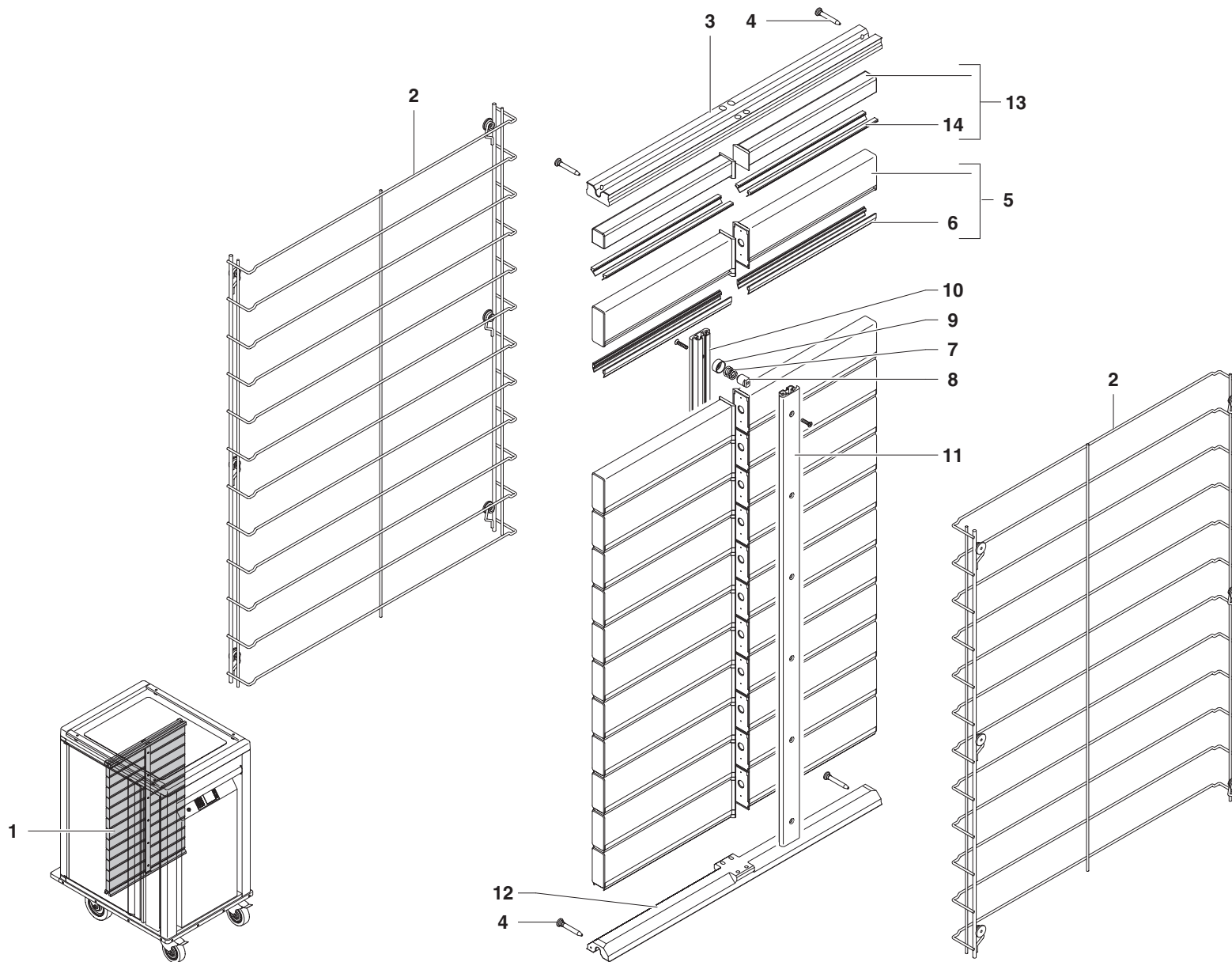
n.	Code	Note
1	MMIN21090	H12
2	AVST10510	
3	MMIN52100	
4	MMIN20090	
5	ARUO30010	
6	MDST86401064360	
7	MDST11500214360	

Tab.

14

00

TMTS00050001 V.1
06/16



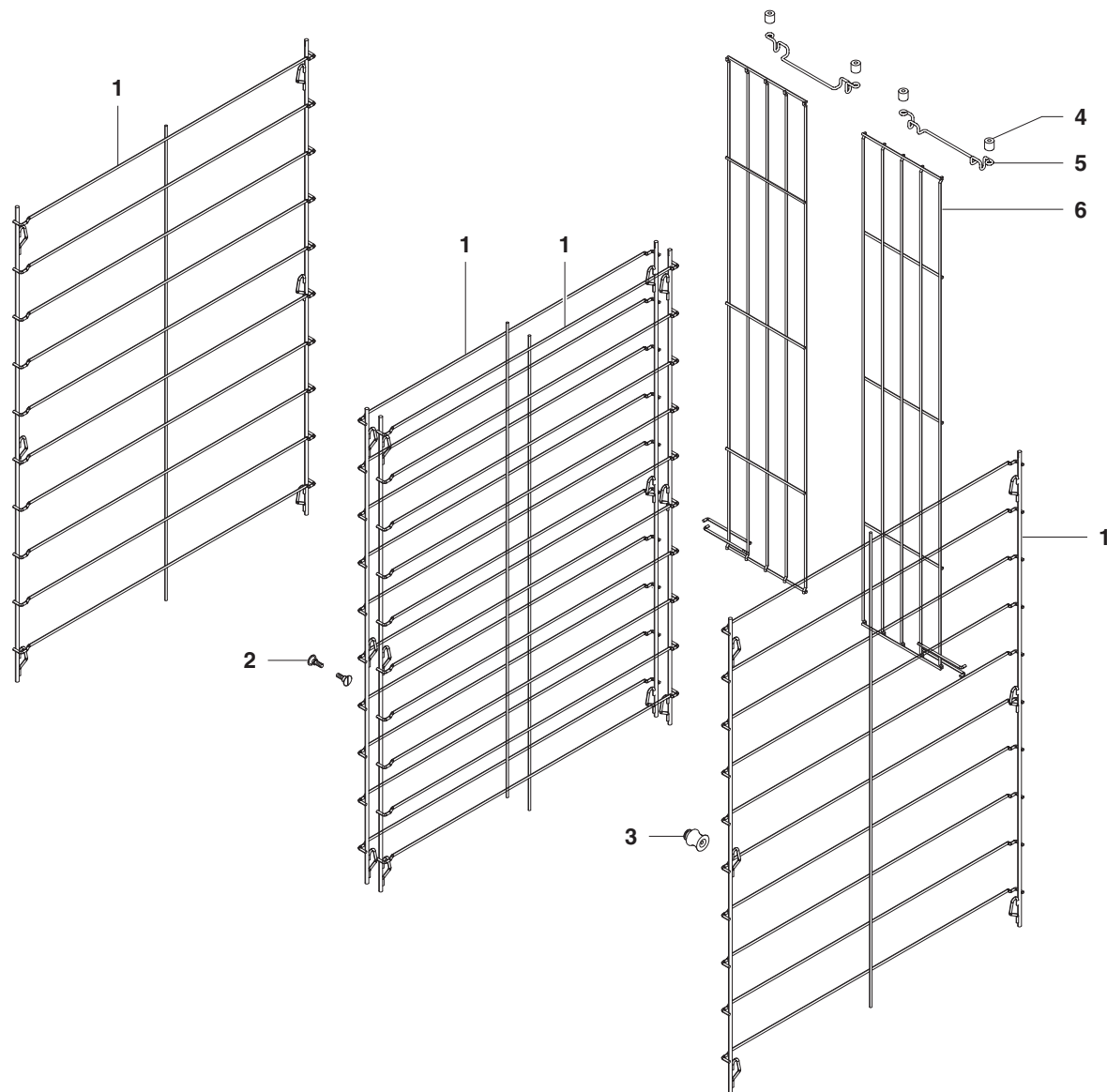
n.	Code	Note
1	GPDV30120B00002	SMALL-20
1	GPDV30124B00002	SMALL-24
1	GPDV30126A00002	LARGE-26
1	GPDV30130A00002	LARGE-30
2	MSUV1010914000000	SMALL-20 GN
2	MSUV1010915000000	LARGE-26 GN
2	MSUP10200	SMALL-24 GN
2	MSUP10210	LARGE-30 GN
2	MSUV10309140100000	SMALL-20 EXT
2	MSUV10309150100000	LARGE-26 EXT
2	MSUP10010	SMALL-24 EXT
2	MSUP10090	LARGE-30 EXT
2	MSUV11409140000000	SMALL-20 FLAT
2	MSUV11409040000000	SMALL-24 FLAT
2	MSUV11409150000000	LARGE-26 FLAT
2	MSUV11409070000000	LARGE-30 FLAT
3	MPDV04090101002	
4	MPDV17010000001	
5	GMDV30112200000	P91.15 GN
5	GMDV30103200000	P79 GN
6	MGUA01070616N14000	
7	MMOL01010312011130	
8	MDST83700943000	
9	MPDV180200AB000	BLUE
10	MPDV020215AB002	BLUE SMALL
10	MPDV020216AB002	BLUE LARGE
11	MPDV0202159A002	RED SMALL
11	MPDV0202169A002	RED LARGE
12	MPDV04090102002	
13	GMDV00113302000	
14	MGUA02170605N03000	

Tab.

15

00

TMTS00050001 V.1
06/16



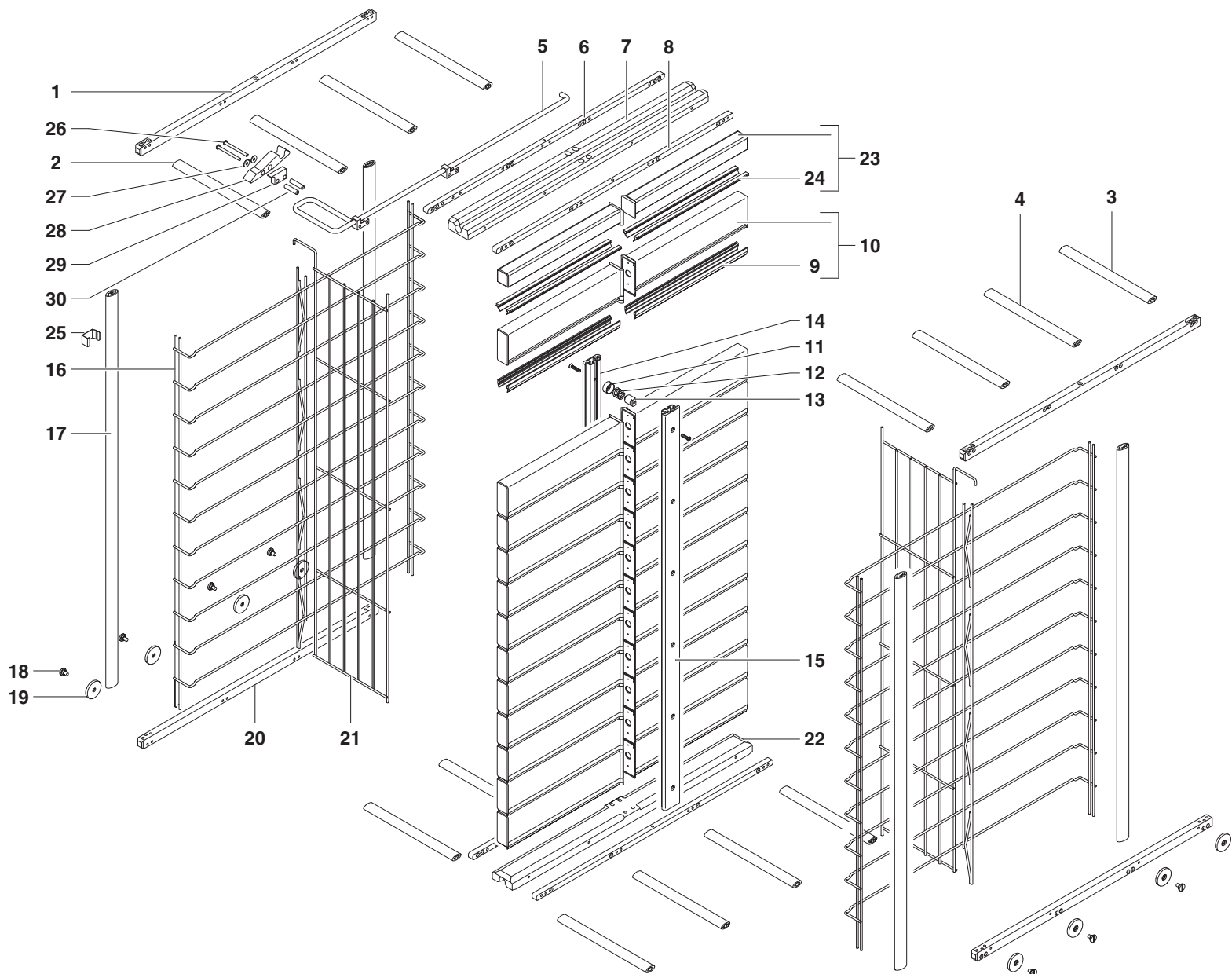
n.	Code	Note
1	MSUV11209185000000	SMALL 40
1	MSUV11209225000000	LARGE 52
1	MSUV11209235000000	SMALL 48
2	MMIN20030	
3	MPAG00010002500	
4	MDST27200268500	
5	MSUP01012900000	
6	MACO60270128000	SMALL
6	MACO61270128000	LARGE

Tab.

16

00

TMTS00050001 V.1
06/16



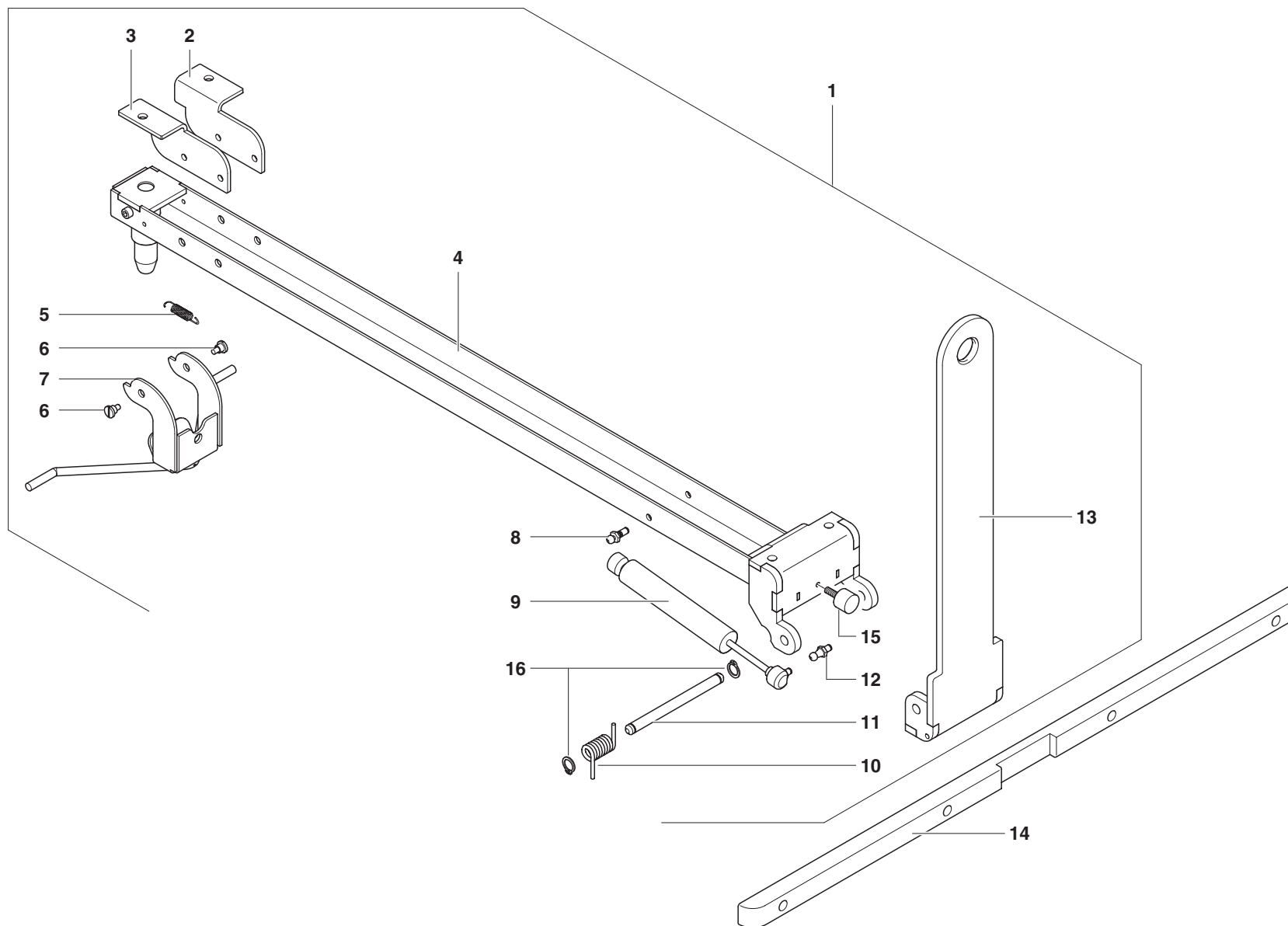
n.	Code	Note
1	MMIN50190	
2	MMIN50200-BLU	BLUE
3	MMIN50200-RED	RED
4	MMIN50200	GREY
5	MMIN50580	
6	MMIN50570	
7	MCST45109090002	
8	MMIN50230	
9	MGUA01070616N14000	
10	GMDV30112200000	P91.15 GN
10	GMDV30103200000	P79 GN
11	MPDV180200AB000	BLUE
12	MMOL01010312011130	
13	MDST83700943000	
14	MPDV020215AB002	BLUE SMALL
14	MPDV020216AB002	BLUE LARGE
15	MPDV0202159A002	RED SMALL
15	MPDV0202169A002	RED LARGE
16	MSUV10110140000000	SMALL-20 GN
16	MSUP10110	SMALL-24 EXT
16	MSUP10100	LARGE-30 EXT
16	MSUV10310140100000	SMALL-20 EXT
16	MSUV10310150100000	LARGE-26 EXT
16	MSUP10160	SMALL-24 GN
16	MSUP10170	LARGE-30 GN
16	MSUV10110150000000	LARGE-26 GN
16	MSUV11410143600000	SMALL-20 FLAT
16	MSUV11410043600000	SMALL-24 FLAT
16	MSUV11410153600000	LARGE-26 FLAT
16	MSUV11410073600000	LARGE-30 FLAT
17	MMIN50300	SMALL
17	MMIN50210	LARGE
18	MMIN20120	
19	MMIN50470	
20	MMIN50460	
21	MACO60280128000	SMALL
21	MACO61280128000	LARGE
22	MCST44109090002	
23	GMDV00113302000	P36.5 GN
24	MGUA02170605N03000	
25	MMOL60010	
26	AVTBXEI0530	
27	ARON10005G	
28	MCST55004104110	
29	MCST60009006110	
30	MMIN52390	

Tab.

17

00

TMTS00050001_V.1
06/16



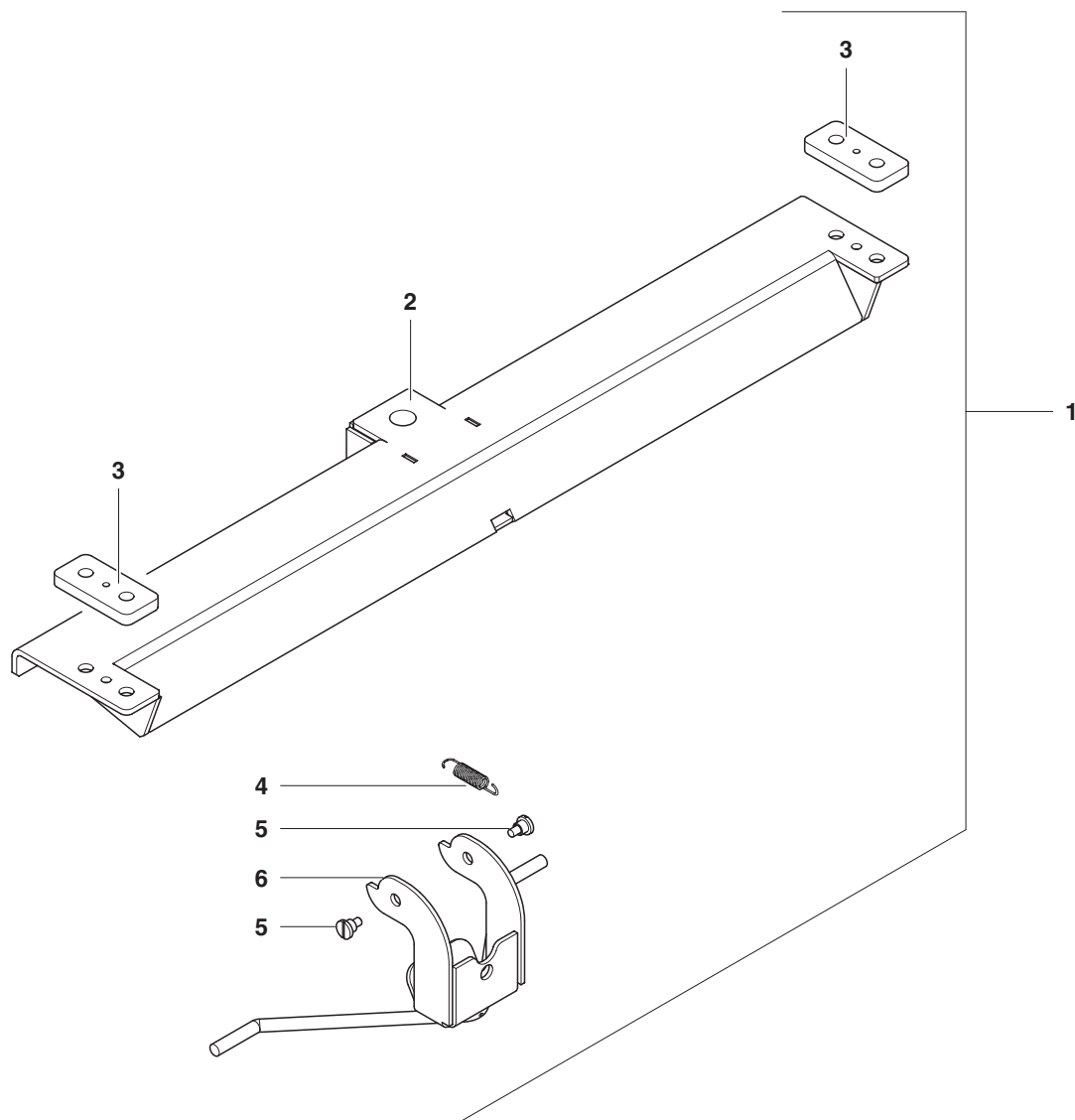
n.	Code	Note
1	GAGT11080200100	
2	MDST61691262360	
3	MDST61681262360	
4	MAGT03011100100	
5	MMOL02010708107090	
6	MMIN21000	
7	MAGT07031100000	
8	MMOL5004	
9	MMOL5003	
10	MMOL03010202202020	
11	MGTMP30030	
12	MMOL5002	
13	MAGT01011100100	
14	MACO67440415360	
15	AAGV20020	
16	ARON00030	

Tab.

18

00

TMTS00050001 V.1
06/16



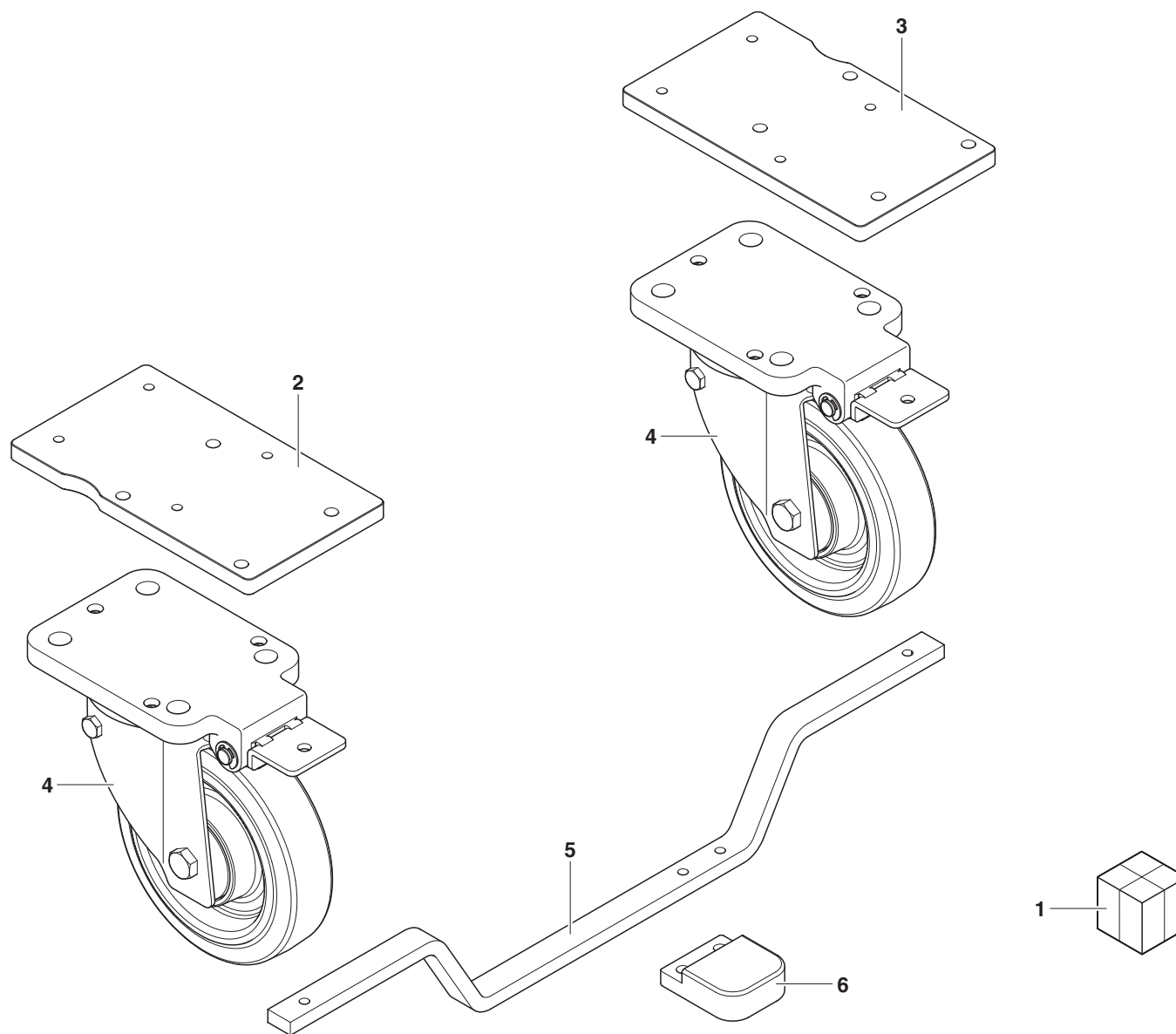
n.	Code	Note
1	GAGT11000200110	
2	MAGT05011100110	
3	MDST96701262400	
4	MMOL02010708107090	
5	MMIN21000	
6	MAGT03011100100	

Tab.

19

00

TMTS00050001 V.1
06/16



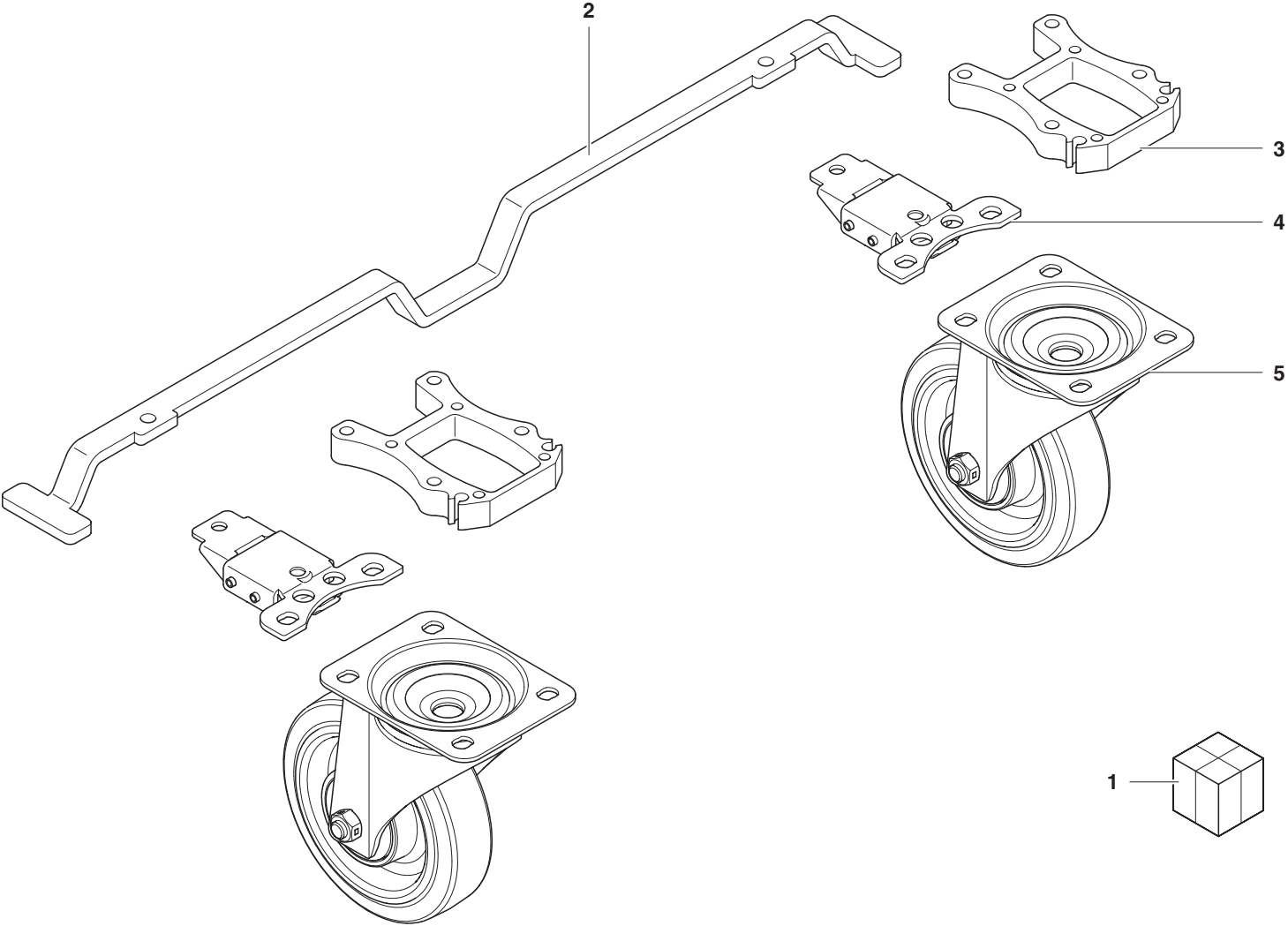
n.	Code	Note
1	GKFC30050	FE ZN
1	GKFC30060	INOX
2	MDST81580232360	LEFT H12
3	MDST81590232360	RIGHT H12
4	ARUO50031	INOX
4	ARUO50021	FE
5	MANG31800110360	
6	MMIN51450	

Tab.

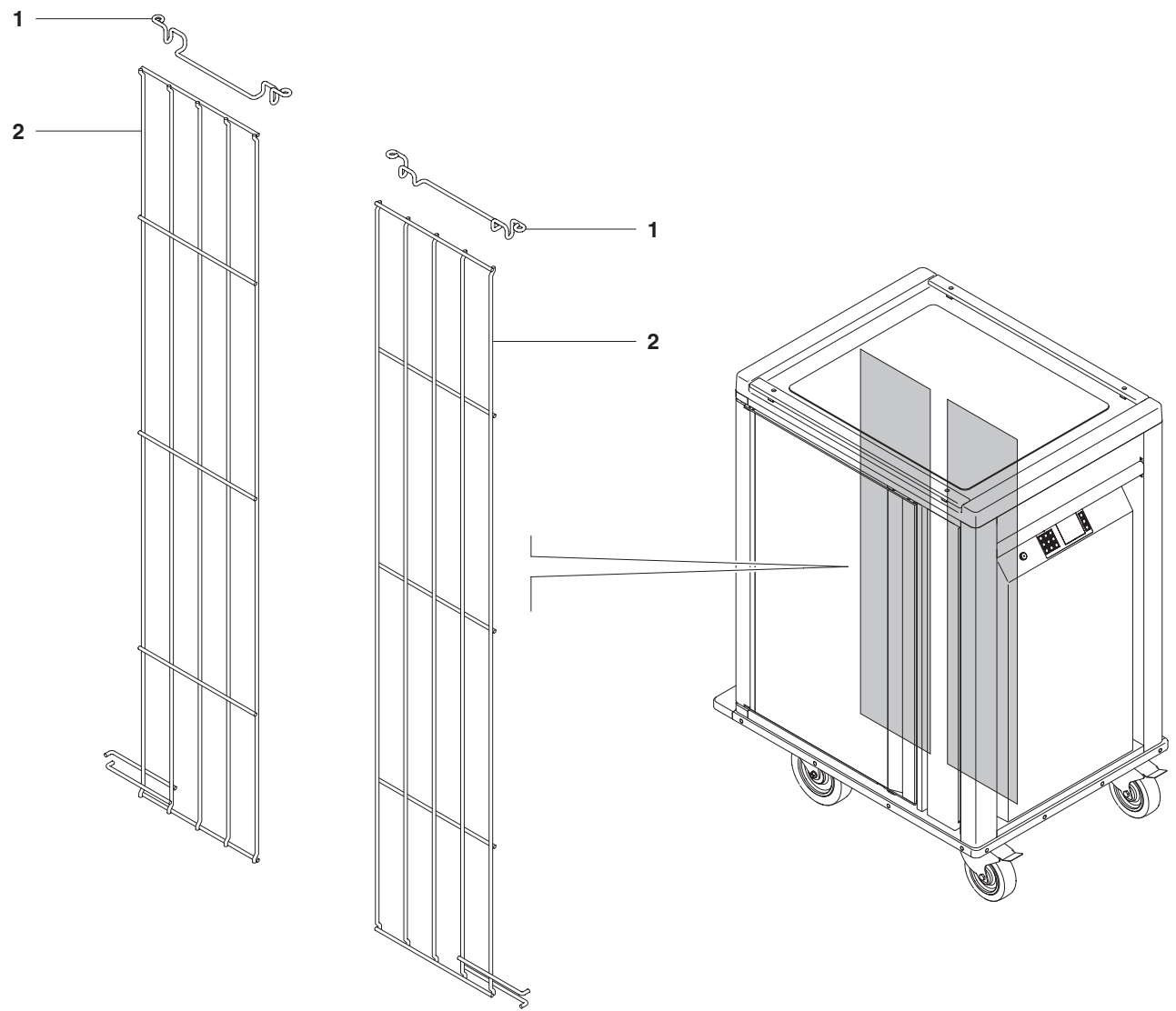
20

00

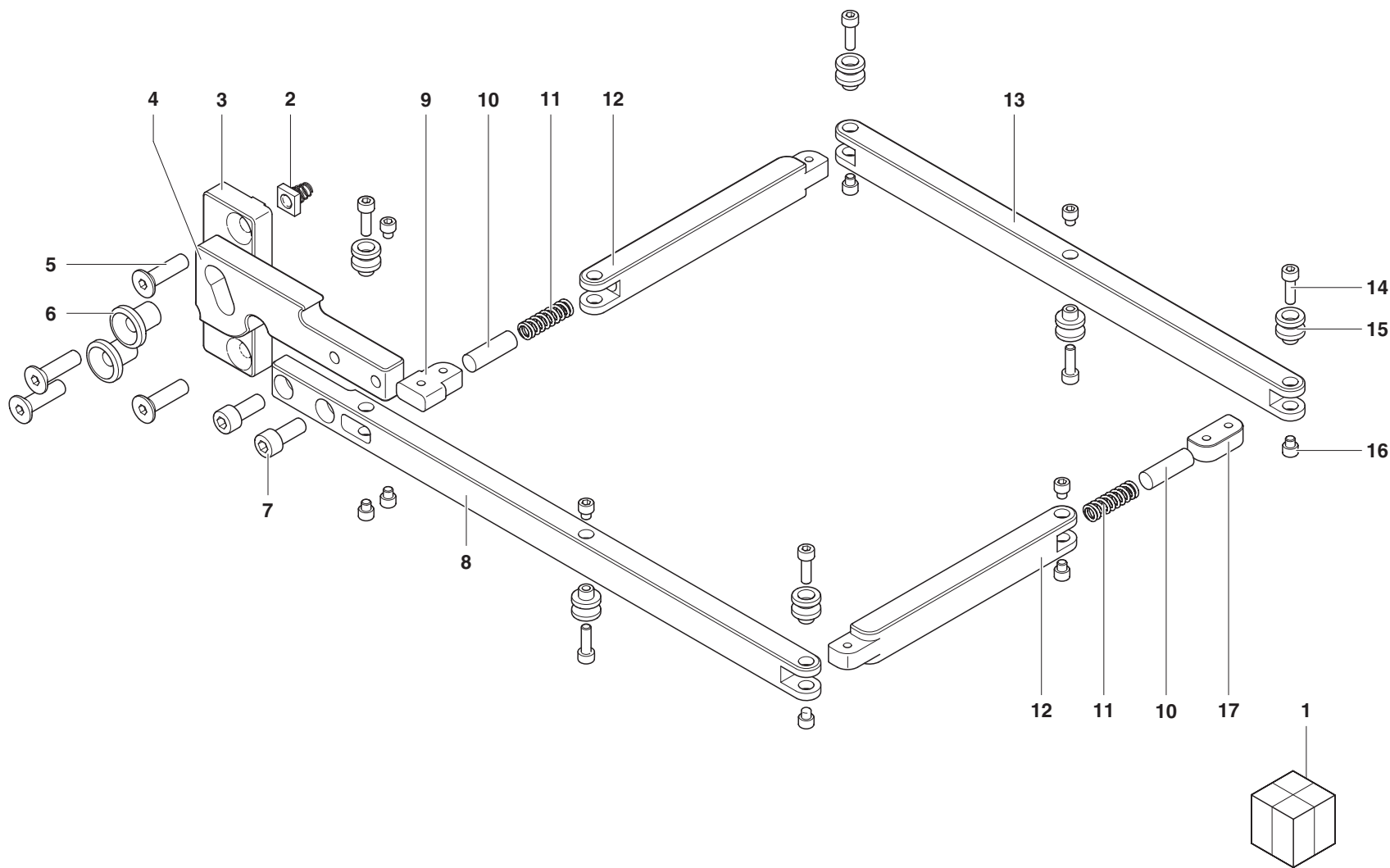
TMTS00050001 V.1
06/16



n.	Code	Note
1	GKBR30010	FE ZN
1	GKBR30020	INOX
2	MACO38140110360	
3	MMIN40160	H 20
4	ARUO40061	INOX
4	ARUO40041	FE ZN
5	ARUO40071	INOX
5	ARUO40031	FE ZN



n.	Code	Note
1	MSUP01012900000	
2	MACO60270128000	SMALL
2	MACO61270128000	LARGE



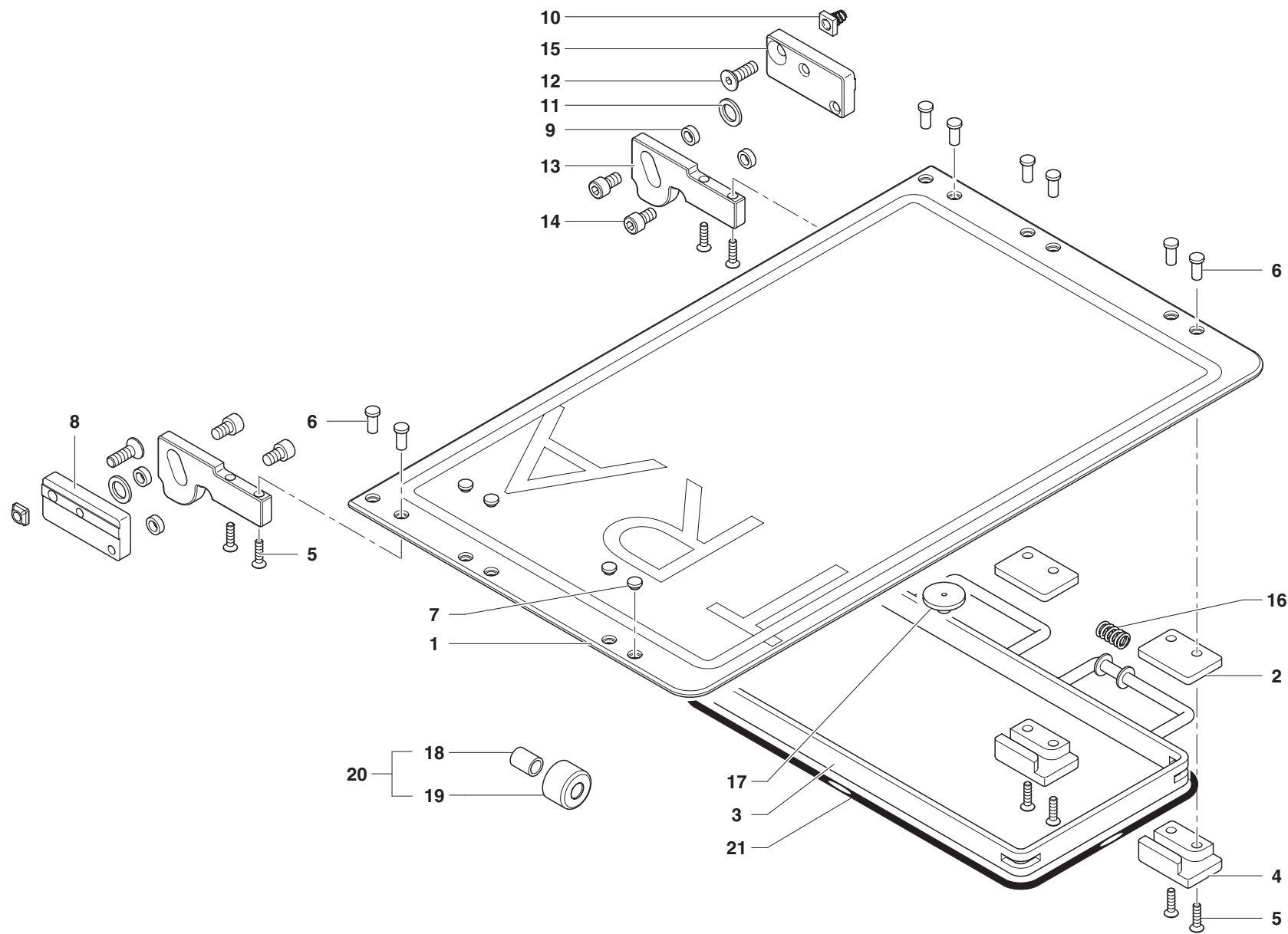
n.	Code	Note
1	GACO3290003N360	RIGHT LEFT
1	GACO3290002N360	
2	GMIN53060	
3	MDST15600258360	
4	MACO71380230360	
5	AVTSXPEI0830	
6	MPCR00010006360	
7	AVTCXEI0820	
8	MACO70380230360	
9	MMIN52050	
10	MMIN52060	
11	MMOL01011116107160	
12	MACO69380230360	
13	MACO68380230360	
14	AVTCXEI0516	
15	MPFG00010006360	
16	MMIN21060	
17	MMIN52040	

Tab.

23

00

TMTS00050001 V.1
06/16



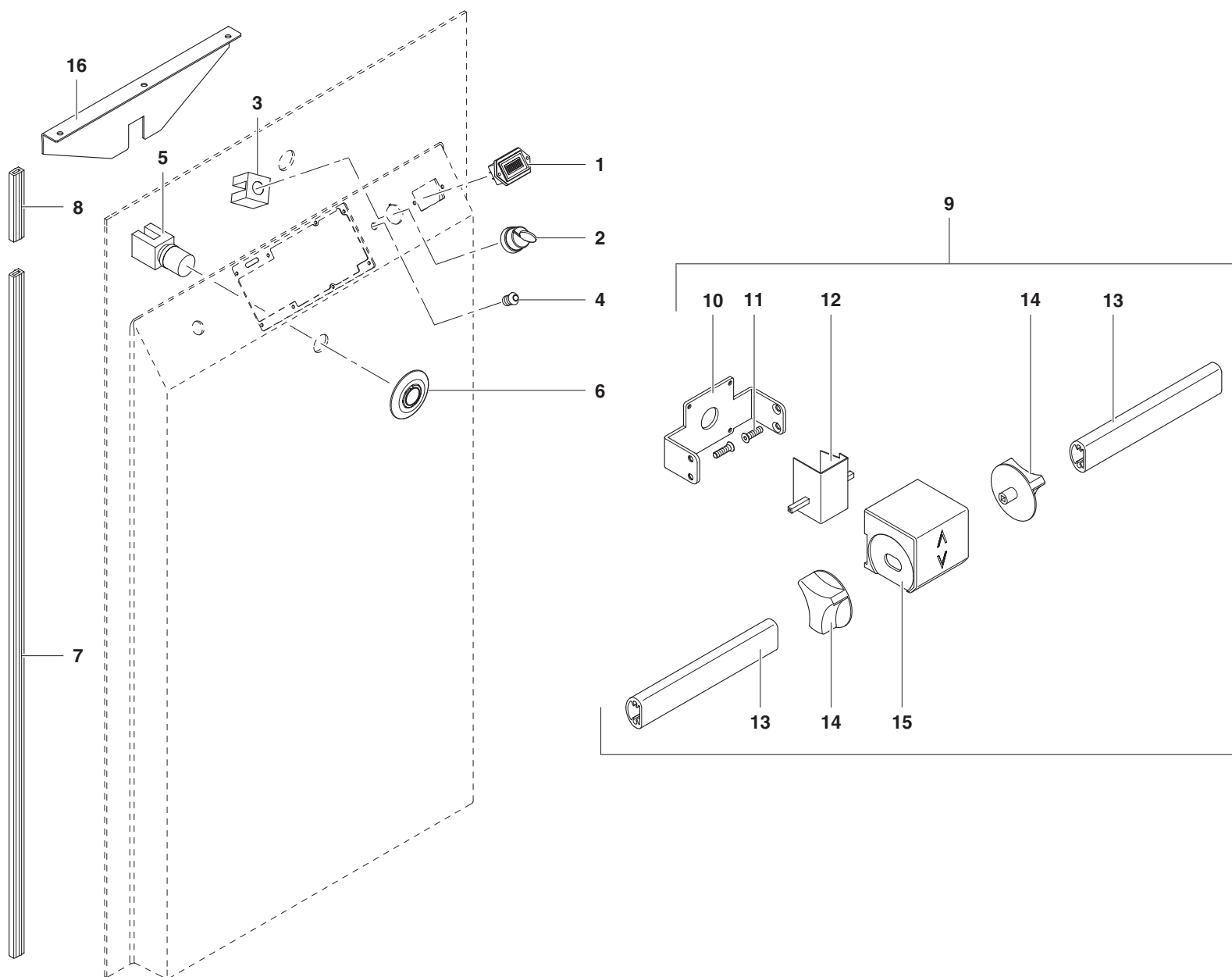
n.	Code	Note
1	MACO32410230360	RIGHT LEFT
2	MDST91000258360	
3	MACO72420100360	
4	MMIN52070	
4	MMIN52080	LEFT
5	AVTSXPEI0520	
6	MMIN30110	
7	MMIN30120	
8	MDST11580259360	LEFT
9	MDST25800140360	
10	GMIN53060	
11	ARON40020	
12	AVTSXPEI0825	MOT RIGHT
13	MACO71030230360	
13	MACO71030230400	
15	MDST11590259360	
16	MMOL10010	
17	MMIN52350	
18	MMIN52330	
19	MMIN52340	
20	GMIN52340	
21	AGCV27877X534	

Tab.

24

00

TMTS00050001 V.1
06/16



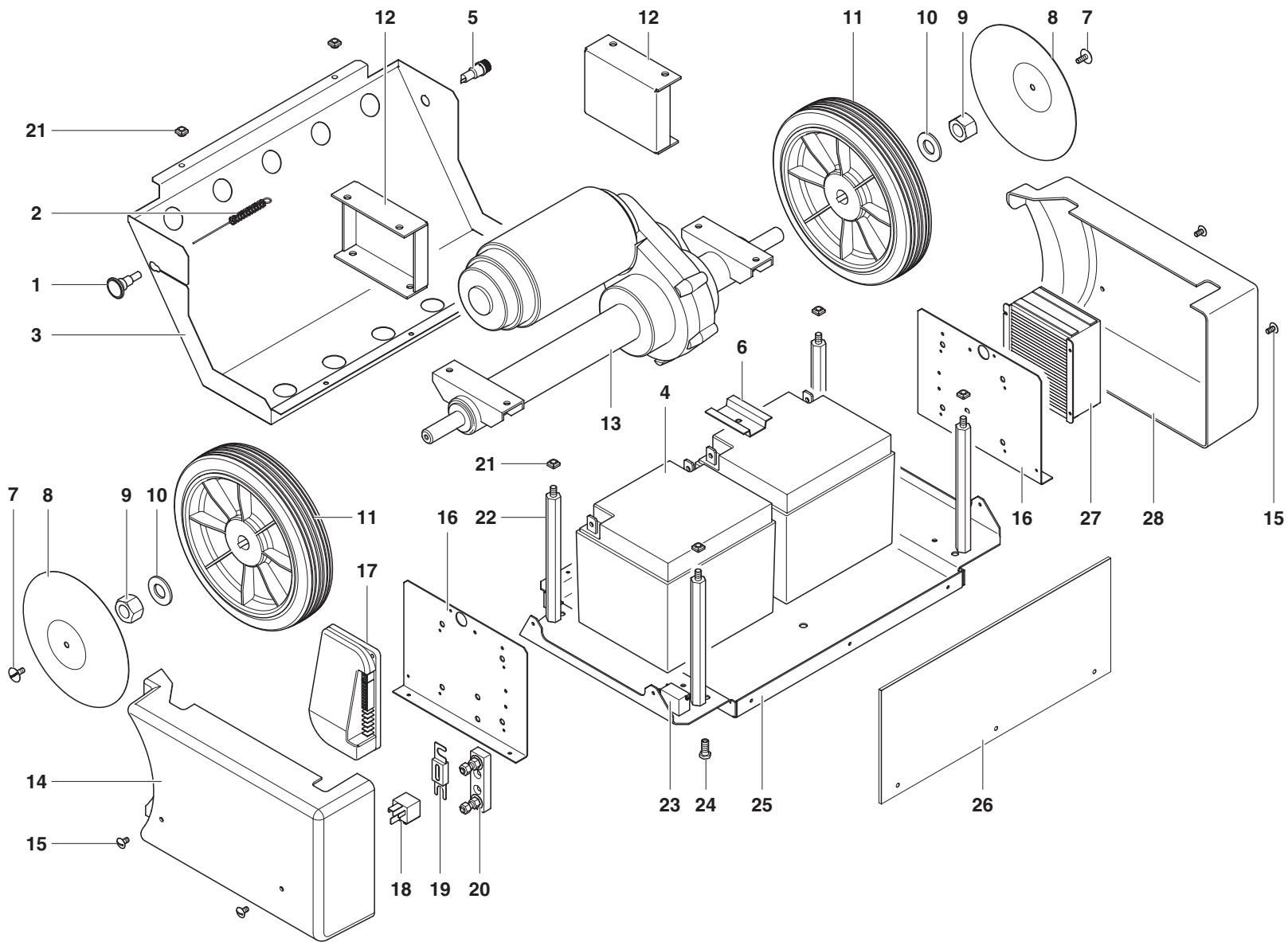
n.	Code	Note
1	ZVICAR10010	SMALL LARGE
2	ZVSEL10030	
3	ZVSEL10040	
4	ZVLED1001	
5	ZVPULS10040	
6	ZVPULS10030	
7	MGUA03301411N26360	
8	MGUA03301412B26360	
8	MGUA03301412A26360	
9	GTCM30101000030	
10	MCRT010801040036N0	
11	MMIN52150	
12	ZVACCEL10010	
13	MMSP2120226N400	
14	ZVACCEL10020	
15	MACO05050230360	
16	MANG34512100400	

Tab.

25

00

TMTS00050001 V.1
06/16



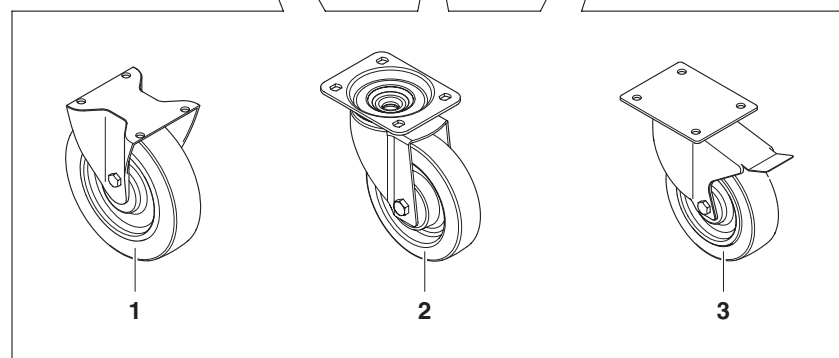
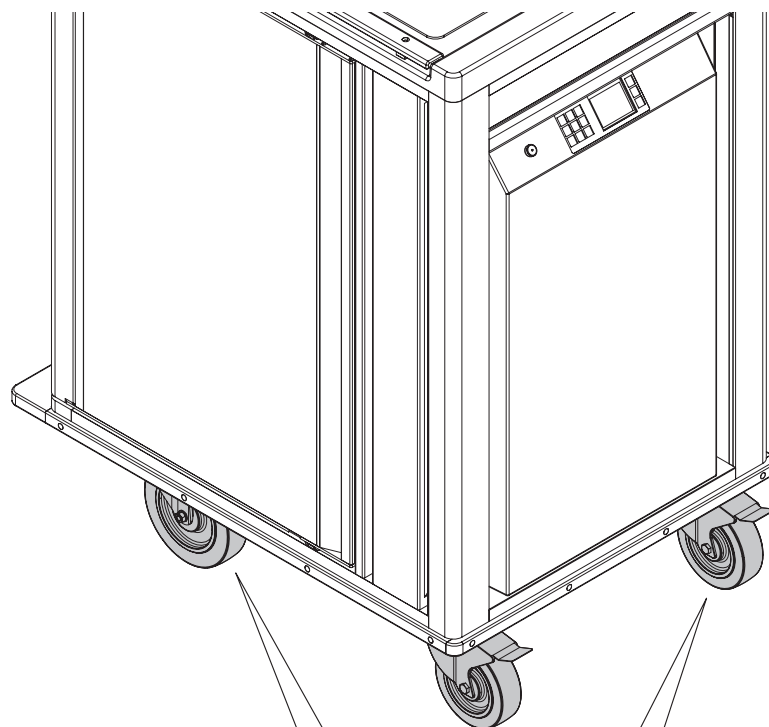
n.	Code	Note
1	MACO13080219010	
2	MMOL08010503103040	
3	MCRT010801020040N0	
4	ZVBATT004	
5	ZVSEZIO004	
6	MANG30900110000	
7	AVPOEL0616	
8	MCRT020701050040N0	
9	ADAD00020	
10	ARON00020	
11	ARUO30050	
12	MDST85701209400	
13	MTDM001	
14	MCRT050301030440N0	
15	AVPOEL10510	
16	MSUP010207000010	
17	ECPU10020	
18	ZVREL001	
19	ZVFUSE006	
20	ZVSEZIO003	
21	ADAI7008	
22	MDST30701208010	
23	ZVREL003	
24	MACO14081200010	
25	MSUP010206000010	
26	MCRT050301030540N0	
27	ZVCBT002	
28	MCRT050301030340N0	

Tab.

26

00

TMTS00050001 V.1
06/16



n.	Code	Note
1	ARUO10090	INOX Ø200 H220
1	ARUO10010	FE Ø200 H220
1	ARUO10061	FE Ø200 H240
1	ARUO10081	INOX Ø200 H240
2	ARUO20150	INOX Ø160 H200
2	ARUO20140	FE Ø160 H200
3	ARUO20080	INOX Ø160 H200
3	ARUO20010	FE Ø160 H200
3	ARUO20071	FE Ø200 H240
3	ARUO20160	INOX Ø200 H240

Tab.

27

00




TMTS00050001 V.1
06/16

Code	Tav. Ed.	Ref.	Code	Tav. Ed.	Ref.	Code	Tav. Ed.	Ref.	Code	Tav. Ed.	Ref.	Code	Tav. Ed.	Ref.
AAGV20020	18-00	15	ARUO50031	20-00	4	GKBR30020	21-00	1	GPIS3BIF0201000360	11-00	17	MACO61280128000	17-00	21
ACUS40010	10-00	9	AVAT10010	01-00	12	GKFC30050	20-00	1	GPIS3BIF0201000360	12-00	24	MACO67350415360	08-00	13
ACUS40010	11-00	9	AVEN20030	01-00	3	GKFC30060	20-00	1	GPIS3BIF0201000360	13-00	24	MACO67360415360	08-00	14
ACUS40010	12-00	13	AVPOEL0616	26-00	7	GMDV00113302000	15-00	13	GPPS3A030001360	11-00	12	MACO67360415420	08-00	14
ACUS40010	13-00	13	AVPOEL10510	26-00	15	GMDV00113302000	17-00	23	GPPS3A030001360	13-00	19	MACO67370415360	08-00	9
ADAD00020	26-00	9	AVST10510	14-00	2	GMDV30103200000	15-00	5	GPPS3A030002360	10-00	12	MACO67440415360	18-00	14
ADAI7006	05-00	25	AVST10808	05-00	8	GMDV30103200000	17-00	10	GPPS3A030002360	12-00	19	MACO68380230360	23-00	13
ADAI7008	05-00	26	AVTBXEI0530	17-00	26	GMDV30112200000	15-00	5	GPPS3B030001360	11-00	12	MACO69380230360	23-00	12
ADAI7008	26-00	21	AVTCXEI0516	23-00	14	GMDV30112200000	17-00	10	GPPS3B030001360	13-00	19	MACO70380230360	23-00	8
AECV20070	02-00	8	AVTCXEI0820	23-00	7	GMIN52340	24-00	20	GPPS3B030002360	10-00	12	MACO71030230360	24-00	13
AECV20080	09-00	7	AVTSXPEI0520	24-00	5	GMIN53060	05-00	27	GPPS3B030002360	12-00	19	MACO71030230400	24-00	13
AELV10010	01-00	17	AVTSXPEI0825	24-00	12	GMIN53060	23-00	2	GPRF306A3626070	10-00	22	MACO71380230360	23-00	4
AFEV10110	08-00	17	AVTSXPEI0830	23-00	5	GMIN53060	24-00	10	GPRF306A4226070	12-00	25	MACO72420100360	24-00	3
AFEV10120	08-00	19	ECPU10020	26-00	17	GMOT20040	01-00	4	GPRF306B3626070	10-00	22	MACO73450110360	01-00	2
AFIL10010	01-00	13	ECPU10050	04-00	3	GMVE10060	02-00	4	GPRF306B4226070	12-00	25	MAGT01011100100	18-00	13
AGAC10010	01-00	20	EICR10050	01-00	32	GPDV30120B00002	15-00	1	GPRF307A3626070	11-00	22	MAGT03011100100	18-00	4
AGCV27877X534	24-00	21	ESAU10050	01-00	31	GPDV30124B00002	15-00	1	GPRF307A4226070	13-00	25	MAGT03011100100	19-00	6
AGEL100010	08-00	3	ESPT10050	01-00	18	GPDV30126A00002	15-00	1	GPRF307B3626070	11-00	22	MAGT05011100110	19-00	2
ARCL10010	01-00	24	GACO3290002N360	23-00	1	GPDV30130A00002	15-00	1	GPRF307B4226070	13-00	25	MAGT07031100000	18-00	7
ARON00020	26-00	10	GACO3290003N360	23-00	1	GPIS3AEC0303000420	12-00	7	GPVA30060	08-00	11	MANG30414100360	06-00	8
ARON00030	18-00	16	GACO3320000N360	08-00	10	GPIS3AEC0303000420	13-00	7	GQEL30081	03-00	1	MANG30900110000	26-00	6
ARON10005G	17-00	27	GACO3340000N360	02-00	9	GPIS3AEF0303000420	12-00	4	GQEL30091	03-00	2	MANG31800110360	20-00	5
ARON40020	24-00	11	GAGT11000200110	19-00	1	GPIS3AEF0303000420	13-00	4	GSON10011	04-00	16	MANG32112226360	06-00	10
ARUO10010	27-00	1	GAGT11080200100	18-00	1	GPIS3AIC0201000360	10-00	20	GSON10021	04-00	17	MANG32112226360	08-00	1
ARUO10061	27-00	1	GCOM10010	01-00	23	GPIS3AIC0201000360	11-00	20	GSON10031	04-00	5	MANG32712226360	05-00	15
ARUO10081	27-00	1	GCSR3C050001100420	13-00	16	GPIS3AIC0201000360	12-00	23	GTCM30101000030	25-00	9	MANG32816226361	09-00	8
ARUO10090	27-00	1	GCSR3C060001100420	12-00	16	GPIS3AIC0201000360	13-00	23	GVCNNNT0470-10	09-00	10	MANG32918226360	05-00	11
ARUO20010	27-00	3	GCSR3C070001100420	13-00	17	GPIS3AIF0201000360	10-00	17	GVCNNNT0480	09-00	12	MANG32920226360	09-00	1
ARUO20071	27-00	3	GCSR3C080001100420	12-00	17	GPIS3AIF0201000360	11-00	17	MACO05050230360	25-00	15	MANG33000226360	10-00	1
ARUO20080	27-00	3	GCSR3F050001100360	11-00	5	GPIS3AIF0201000360	12-00	24	MACO13080219010	26-00	1	MANG33000226360	11-00	1
ARUO20140	27-00	2	GCSR3F050001100420	13-00	15	GPIS3AIF0201000360	13-00	24	MACO14081200010	26-00	24	MANG33000226360	12-00	1
ARUO20150	27-00	2	GCSR3F060001100360	10-00	5	GPIS3BEC0303000420	12-00	7	MACO32410230360	24-00	1	MANG33000226360	13-00	1
ARUO20160	27-00	3	GCSR3F060001100420	12-00	15	GPIS3BEC0303000420	13-00	7	MACO37001013360	04-00	15	MANG33115226360S2	05-00	10
ARUO30010	14-00	5	GCSR3F070001100360	11-00	16	GPIS3BEF0303000420	12-00	4	MACO38140110360	21-00	2	MANG33115230360	05-00	10
ARUO30050	26-00	11	GCSR3F070001100420	13-00	9	GPIS3BEF0303000420	13-00	4	MACO41000106360	02-00	7	MANG33220226360	09-00	2
ARUO40031	21-00	5	GCSR3F080001100360	10-00	16	GPIS3BIC0201000360	10-00	20	MACO60270128000	16-00	6	MANG33316226361	09-00	9
ARUO40041	21-00	4	GCSR3F080001100420	12-00	9	GPIS3BIC0201000360	11-00	20	MACO60270128000	22-00	2	MANG33413226360	05-00	5
ARUO40061	21-00	4	GECV10010	09-00	3	GPIS3BIC0201000360	12-00	23	MACO60280128000	17-00	21	MANG33513226360	05-00	5
ARUO40071	21-00	5	GELV00020	01-00	16	GPIS3BIC0201000360	13-00	23	MACO61270128000	16-00	6	MANG33600226360	05-00	21
ARUO50021	20-00	4	GKBR30010	21-00	1	GPIS3BIF0201000360	10-00	17	MACO61270128000	22-00	2	MANG33716226361	09-00	8

INDICE NUMERICO E DESCRIZIONI • NUMERICAL INDEX AND DESCRIPTIONS • NUMERISCHES VERZEICHNIS • INDEX NUMERIQUE ET DESCRIPTION •
NUMEROHAKEMISTO JA KUVUKSET • NUMERIEKE INDEX EN BESCHRIJVINGEN • SPIS NUMERYCZNY I OPISY • ÍNDICE NUMÉRICO E DESCRIÇÕES •
УКАЗАТЕЛЬ ПО НОМЕРАМ И ОПИСАНИЕ • ÍNDICE NUMÉRICO Y DESCRIPCIONES • NUMERISK FORTEGNEELSE OG BESKRIVELSE

Code	Tav. Ed.	Ref.	Code	Tav. Ed.	Ref.	Code	Tav. Ed.	Ref.	Code	Tav. Ed.	Ref.	Code	Tav. Ed.	Ref.
MANG33818226360	05-00	11	MCRT010801040036N0	25-00	10	MDST81580232360	20-00	2	MGUA02170415A23360	13-00	22	MGUA03300113A20360	05-00	18
MANG33820226360	09-00	1	MCRT020701050040N0	26-00	8	MDST81590232360	20-00	3	MGUA02170415B23360	10-00	18	MGUA03300113B20360	05-00	18
MANG33900226360	10-00	1	MCRT020701160036N0	09-00	4	MDST82000957360	04-00	10	MGUA02170415B23360	11-00	18	MGUA03301411N26360	05-00	24
MANG33900226360	11-00	1	MCRT050301030340N0	26-00	28	MDST83700943000	15-00	8	MGUA02170415B23360	12-00	22	MGUA03301411N26360	25-00	7
MANG33900226360	12-00	1	MCRT050301030440N0	26-00	14	MDST83700943000	17-00	13	MGUA02170415B23360	13-00	22	MGUA03301412A26360	25-00	8
MANG33900226360	13-00	1	MCRT050301030540N0	26-00	26	MDST84300244360	01-00	29	MGUA02170515N27360	05-00	28	MGUA03301412A26400	05-00	19
MANG34015226360OS2	05-00	10	MCST44109090002	17-00	22	MDST84601748000	10-00	7	MGUA02170516A18360	05-00	14	MGUA03301412B26360	05-00	19
MANG34015230360	05-00	10	MCST45109090002	17-00	7	MDST84601748000	11-00	7	MGUA02170516B18360	05-00	14	MGUA03301412B26360	25-00	8
MANG34120226360	09-00	2	MCST55004104110	17-00	28	MDST84601748000	12-00	10	MGUA02170605N03000	15-00	14	MMIN20030	16-00	2
MANG34216226361	09-00	13	MCST60009006110	17-00	29	MDST84601748000	13-00	10	MGUA02170605N03000	17-00	24	MMIN20090	14-00	4
MANG34316226361	09-00	13	MCVC3010106A360	01-00	1	MDST85400256360	02-00	6	MGUA02171113A19360	05-00	6	MMIN20120	17-00	18
MANG34416226361	09-00	9	MCVC3010106B360	01-00	1	MDST85500244360	01-00	30	MGUA02171113B19360	05-00	6	MMIN21000	18-00	6
MANG34512100360	04-00	2	MCVF3010206A360	02-00	1	MDST85701209400	26-00	12	MGUA02171113B19360	05-00	16	MMIN21000	19-00	5
MANG34512100400	25-00	16	MCVF3010206B360	02-00	1	MDST86401064360	14-00	6	MGUA02171114N19360	06-00	9	MMIN21060	23-00	16
MANG34600100360	05-00	23	MCVPC022600A360	10-00	19	MDST86500148360	09-00	6	MGUA02171114N19360	08-00	2	MMIN21090	14-00	1
MANG34700110360	05-00	20	MCVPC022600A360	11-00	19	MDST91000258360	24-00	2	MGUA02171201A21360	10-00	13	MMIN30110	24-00	6
MANG34816226361	09-00	11	MCVPC022600A420	12-00	6	MDST96701262400	19-00	3	MGUA02171201A21360	11-00	13	MMIN30120	24-00	7
MANG34916226361	09-00	11	MCVPC022600A420	13-00	6	MEVA10170	02-00	5	MGUA02171201A21360	12-00	20	MMIN40160	21-00	3
MBRR01000226360	06-00	2	MCVPC022600B360	10-00	19	MEVA10180	01-00	7	MGUA02171201A21360	13-00	20	MMIN50190	17-00	1
MBRR02000226360	06-00	3	MCVPC022600B360	11-00	19	MEVA10190	02-00	5	MGUA02171201B21360	10-00	13	MMIN50200	17-00	4
MCAVE01A0A01000	04-00	14	MCVPC022600B420	12-00	6	MEVA10200	01-00	7	MGUA02171201B21360	11-00	13	MMIN50200-BLU	17-00	2
MCAVE01A0B01000	04-00	14	MCVPC022600B420	13-00	6	MFIA302A0726360	05-00	17	MGUA02171201B21360	12-00	20	MMIN50200-RED	17-00	3
MCAVE01B0A01000	04-00	14	MDST11500214360	14-00	7	MFIA302A0826360	05-00	4	MGUA02171201B21360	13-00	20	MMIN50210	17-00	17
MCAVE01B0B01000	04-00	14	MDST11580259360	24-00	8	MFIA302B0726360	05-00	17	MGUA02171202A24360	10-00	3	MMIN50230	17-00	8
MCAVE01C0A01000	04-00	14	MDST11590259360	24-00	15	MFIA302B0826360	05-00	4	MGUA02171202A24360	11-00	3	MMIN50300	17-00	17
MCAVE01C0B01000	04-00	14	MDST15600258360	23-00	3	MFIA302N1726360	06-00	7	MGUA02171202A24360	12-00	3	MMIN50460	17-00	20
MCAVE02C0A01000	04-00	14	MDST24500148000	10-00	10	MFIA302N1726420	06-00	7	MGUA02171202A24360	13-00	3	MMIN50470	17-00	19
MCAVE02C0B01000	04-00	14	MDST24500148000	11-00	10	MFIA302N1826360	08-00	15	MGUA02171202B24360	10-00	3	MMIN50570	17-00	6
MCAVE03B0A01000	04-00	14	MDST24500148000	12-00	14	MFIA302N1826420	08-00	15	MGUA02171202B24360	11-00	3	MMIN50580	17-00	5
MCAVE03B0B01000	04-00	14	MDST24500148000	13-00	14	MFIA302N1926360	06-00	13	MGUA02171202B24360	12-00	3	MMIN51440	01-00	26
MCAVE03C0A01000	04-00	14	MDST25800140360	24-00	9	MFIA302N1926420	06-00	13	MGUA02171202B24360	13-00	3	MMIN51450	20-00	6
MCAVE03C0B01000	04-00	14	MDST26000260360	04-00	4	MFIA302N2026360	08-00	7	MGUA02171313A22360	10-00	14	MMIN51880	10-00	15
MCON10080	01-00	8	MDST27200268500	16-00	4	MFIA302N2026420	08-00	7	MGUA02171313A22360	11-00	14	MMIN51880	11-00	15
MCOS305N0028360	06-00	1	MDST30701208010	26-00	22	MFPO00022604360	08-00	20	MGUA02171313A22360	12-00	21	MMIN51880	12-00	18
MCOS305N0534360	06-00	1	MDST60180215360	06-00	11	MGTMP30030	18-00	11	MGUA02171313A22360	13-00	21	MMIN51880	13-00	18
MCRT010002010036N0	01-00	9	MDST60180215360	08-00	5	MGUA01070616N14000	15-00	6	MGUA02171313B22360	10-00	14	MMIN51890	10-00	6
MCRT010002080036N0	01-00	9	MDST60190215360	06-00	4	MGUA01070616N14000	17-00	9	MGUA02171313B22360	11-00	14	MMIN51890	11-00	6
MCRT010401010736A0	05-00	12	MDST60190215360	08-00	6	MGUA02170415A23360	10-00	18	MGUA02171313B22360	12-00	21	MMIN51890	12-00	11
MCRT010401010836A0	05-00	13	MDST61681262360	18-00	3	MGUA02170415A23360	11-00	18	MGUA02171313B22360	13-00	21	MMIN51890	13-00	11
MCRT010801020040N0	26-00	3	MDST61691262360	18-00	2	MGUA02170415A23360	12-00	22	MGUA03130300N25360	06-00	5	MMIN51990	10-00	21

INDICE NUMERICO E DESCRIZIONI • NUMERICAL INDEX AND DESCRIPTIONS • NUMERISCHES VERZEICHNIS • INDEX NUMERIQUE ET DESCRIPTION •
NUMEROHAKEMISTO JA KUVAUKSET • NUMERIEKE INDEX EN BESCHRIJVINGEN • SPIS NUMERYCZNY I OPISY • ÍNDICE NUMÉRICO E DESCRIÇÕES •
УКАЗАТЕЛЬ ПО НОМЕРАМ И ОПИСАНИЕ • ÍNDICE NUMÉRICO Y DESCRIPCIONES • NUMERISK FORTEGNEELSE OG BESKRIVELSE

Code	Tav. Ed.	Ref.	Code	Tav. Ed.	Ref.	Code	Tav. Ed.	Ref.	Code	Tav. Ed.	Ref.	Code	Tav. Ed.	Ref.
MMIN51990	11-00	21	MMOL08010503103040	26-00	2	MPPC3022615A420	12-00	5	MSUV11209225000000	16-00	1	ZSPN401202202	04-00	9
MMIN52010	05-00	2	MMOL10010	24-00	16	MPPC3022615A420	13-00	5	MSUV11209235000000	16-00	1	ZTEL10060	03-00	4
MMIN52020	08-00	12	MMOL5002	18-00	12	MPPC3022615B420	12-00	5	MSUV11409040000000	15-00	2	ZTRM10070	01-00	14
MMIN52030	09-00	5	MMOL5003	18-00	9	MPPC3022615B420	13-00	5	MSUV11409070000000	15-00	2	ZVACCEL10010	25-00	12
MMIN52040	23-00	17	MMOL5004	18-00	8	MPPE3070029A360	10-00	11	MSUV11409140000000	15-00	2	ZVACCEL10020	25-00	14
MMIN52050	23-00	9	MMOL60010	17-00	25	MPPE3070029A360	11-00	11	MSUV11409150000000	15-00	2	ZVALIM10040	01-00	19
MMIN52060	23-00	10	MMSP2110226N360	05-00	22	MPPE3070029B360	10-00	11	MSUV11410043600000	17-00	16	ZVBATT001	01-00	21
MMIN52070	24-00	4	MMSP2120226N400	25-00	13	MPPE3070029B360	11-00	11	MSUV11410073600000	17-00	16	ZVBATT004	26-00	4
MMIN52080	24-00	4	MPAG00010002500	16-00	3	MPVA30060	08-00	4	MSUV11410143600000	17-00	16	ZVCBT002	26-00	27
MMIN52100	14-00	3	MPCR00010006360	23-00	6	MSUP01000310360	01-00	27	MSUV11410153600000	17-00	16	ZVFILTR001	03-00	9
MMIN52130	08-00	16	MPCR02010007360	02-00	10	MSUP01012900000	16-00	5	MTDM001	26-00	13	ZVFUSE006	26-00	19
MMIN52150	25-00	11	MPDV0202159A002	15-00	11	MSUP01012900000	22-00	1	MTES302N1026360	06-00	12	ZVICAR10010	25-00	1
MMIN52330	24-00	18	MPDV0202159A002	17-00	15	MSUP01013400360	01-00	28	MTES302N1026360	08-00	8	ZVLED1001	25-00	4
MMIN52340	24-00	19	MPDV020215AB002	15-00	10	MSUP01020600010	26-00	25	MTES302N1126360	05-00	9	ZVMORS001	03-00	6
MMIN52350	24-00	17	MPDV020215AB002	17-00	14	MSUP01020700010	26-00	16	MTES302N1126360	06-00	6	ZVMORS002	03-00	5
MMIN52360	07-00	2	MPDV0202169A002	15-00	11	MSUP01021400360	01-00	11	MTES302N1126440	07-00	1	ZVMORS003	01-00	25
MMIN52370	07-00	3	MPDV0202169A002	17-00	15	MSUP01023700360	01-00	22	MTES302N1126450	07-00	1	ZVPRECA006	04-00	13
MMIN52390	17-00	30	MPDV020216AB002	15-00	10	MSUP10010	15-00	2	MTES307A0029360	05-00	1	ZVPRECA007	04-00	12
MMIN53020	05-00	29	MPDV020216AB002	17-00	14	MSUP10023300360	04-00	8	MTES307B0029360	05-00	1	ZVPRECA008	04-00	11
MMIN53030	12-00	26	MPDV04090101002	15-00	3	MSUP10023900360	04-00	8	ZMOT20040	03-00	3	ZVPULS10030	25-00	6
MMIN53030	13-00	26	MPDV04090102002	15-00	12	MSUP10024000360	04-00	8	ZMVE10051	01-00	10	ZVPULS10040	25-00	5
MMIN53040	11-00	23	MPDV17010000001	15-00	4	MSUP10024100360	04-00	8	ZMVE10060	02-00	2	ZVREL001	26-00	18
MMIN53040	12-00	26	MPDV180200AB000	15-00	9	MSUP10024400360	04-00	8	ZRES20120	01-00	6	ZVREL003	26-00	23
MMIN53040	13-00	26	MPDV180200AB000	17-00	11	MSUP10090	15-00	2	ZRES20130	01-00	5	ZVSEL10030	25-00	2
MMIN53040	10-00	23	MPFG00010006360	23-00	15	MSUP10100	17-00	16	ZRES20140	01-00	5	ZVSEL10040	25-00	3
MMIN53050	12-00	26	MPFG00010007440	07-00	4	MSUP10110	17-00	16	ZRES20150	01-00	5	ZVSEZIO002	03-00	8
MMIN53050	13-00	26	MPFG05010005360	05-00	3	MSUP10160	17-00	16	ZRES20160	01-00	6	ZVSEZIO003	26-00	20
MMOL01010312011130	06-00	14	MPFG06010005360	05-00	7	MSUP10170	17-00	16	ZRES20170	01-00	5	ZVSEZIO004	26-00	5
MMOL01010312011130	15-00	7	MPFG15010005420	10-00	4	MSUP10200	15-00	2	ZRES20180	01-00	6	ZVSEZIO005	03-00	7
MMOL01010312011130	17-00	12	MPFG15010005420	11-00	4	MSUP10210	15-00	2	ZRES20190	01-00	6	ZVTAPPO0009	01-00	15
MMOL01010517103170	08-00	18	MPFG15010005420	12-00	8	MSUP15003600360	02-00	3	ZRES20200	01-00	5		04-00	1
MMOL01011116107160	23-00	11	MPFG15010005420	13-00	8	MSUV10109140000000	15-00	2	ZRES20210	01-00	5		04-00	6
MMOL01011220108200	07-00	5	MPPC3022600A360	10-00	2	MSUV10109150000000	15-00	2	ZRES20220	01-00	5		04-00	7
MMOL02010708107090	18-00	5	MPPC3022600A360	11-00	2	MSUV10110140000000	17-00	16	ZRES20230	01-00	6			
MMOL02010708107090	19-00	4	MPPC3022600A360	12-00	2	MSUV10110150000000	17-00	16	ZRES20240	01-00	5			
MMOL02011115114150	10-00	8	MPPC3022600A360	13-00	2	MSUV10309140100000	15-00	2	ZRES20250	01-00	6			
MMOL02011115114150	11-00	8	MPPC3022600B360	10-00	2	MSUV10309150100000	15-00	2	ZSPN401101202	04-00	9			
MMOL02011115114150	12-00	12	MPPC3022600B360	11-00	2	MSUV10310140100000	17-00	16	ZSPN401101302	04-00	9			
MMOL02011115114150	13-00	12	MPPC3022600B360	12-00	2	MSUV10310150100000	17-00	16	ZSPN401102202	04-00	9			
MMOL03010202202020	18-00	10	MPPC3022600B360	13-00	2	MSUV11209185000000	16-00	1	ZSPN401103302	04-00	9			

INDICE NUMERICO E DESCRIZIONI • NUMERICAL INDEX AND DESCRIPTIONS • NUMERISCHES VERZEICHNIS • INDEX NUMERIQUE ET DESCRIPTION •
NUMEROHAKEMISTO JA KUVAUKSET • NUMERIEKE INDEX EN BESCHRIJVINGEN • SPIS NUMERYCZNY I OPISY • ÍNDICE NUMÉRICO E DESCRIÇÕES •
УКАЗАТЕЛЬ ПО НОМЕРАМ И ОПИСАНИЕ • ÍNDICE NUMÉRICO Y DESCRIPCIONES • NUMERISK FORTEGNEELSE OG BESKRIVELSE

cod. TMTS00050001 V.1 - 06/16

Valido per rev. Prodotto: B
Geldig voor rev.Product: B
Obowiażuje dla zm. Produkt: B
Válido para rev. Produto: B
Действителен для ред. Изделие: B
Válido para rev. Produto: B
Geldig for rev. Produkt: B